



EcoSport™

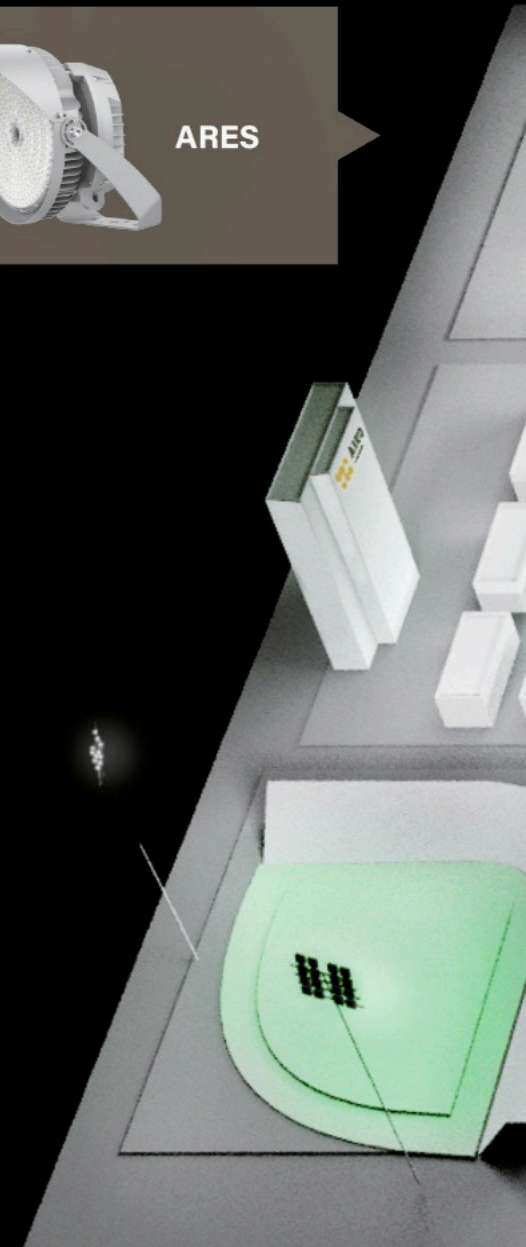
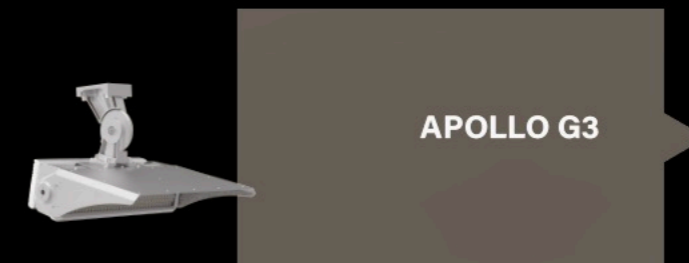
PERFORMANCE *NOT PROMISES*

EcoSport

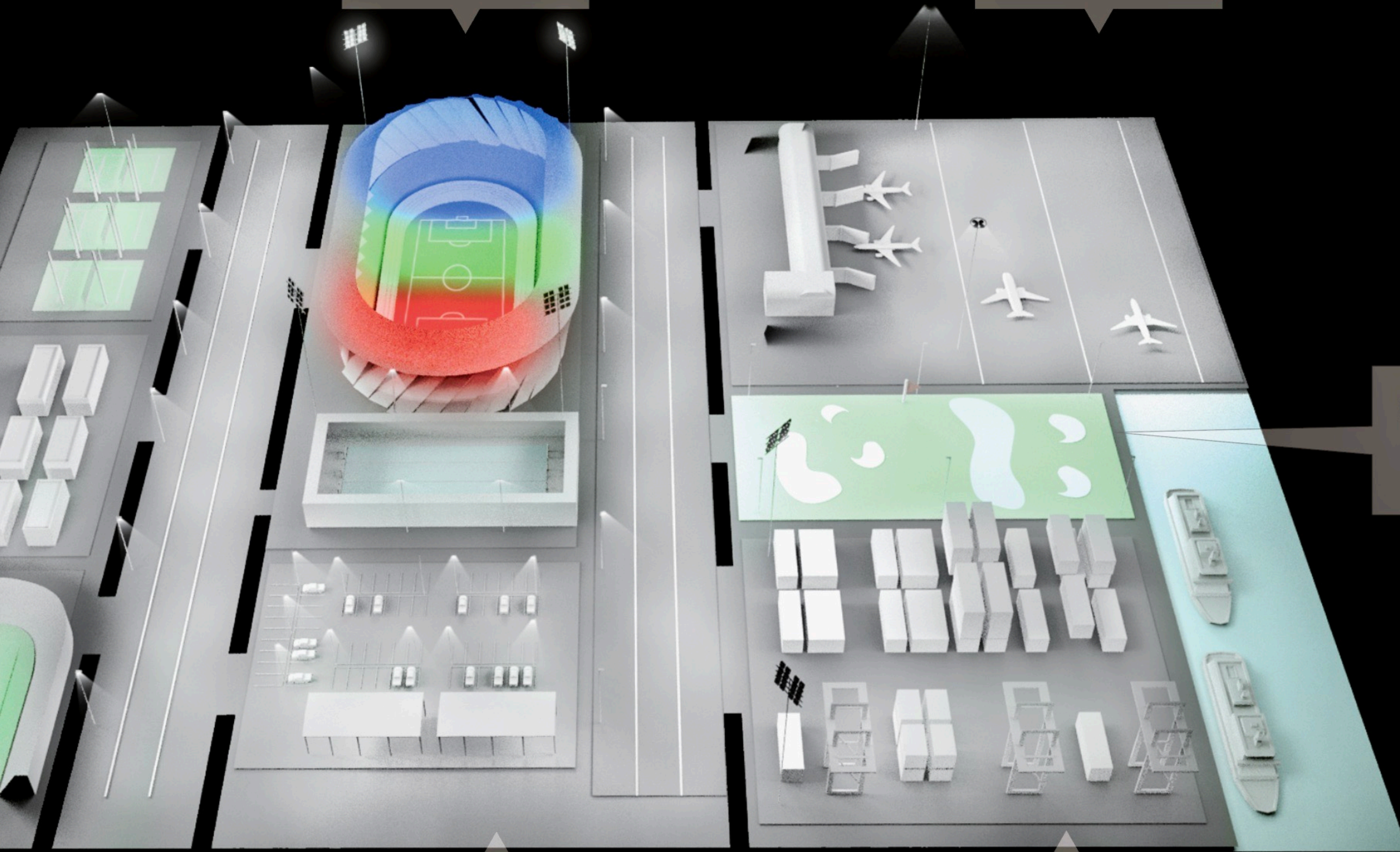
ECOSPORT LED has been focused on sports lighting for 12+ years. Our services include lighting calculations that comply with various industry standards such as UEFA, FIFA, MLB, and NFL, as well as recreational requirements. We also offer on-site assistance with commissioning and measuring illuminance, including FF and TK. Regardless of the size or complexity of the sports venue, whether it's a large arena or a small practice field, an indoor hall, or an outdoor complex, we can provide a customized lighting solution to meet your specific needs.

Our lighting solutions ensure reliable performance with excellent light uniformity, enhancing visibility and efficiency on the ground. Our customized light control system improves lighting quality and reduces installation, labor, and maintenance costs.

At EcoSport, we offer a wide range of products and flexible solutions to meet the lighting needs of various large areas, including airports, wharfs, golf courses, sports facilities, etc. We also provide custom product designs to cater to individual project requirements.



Multi-Function Complex Illumination Solution



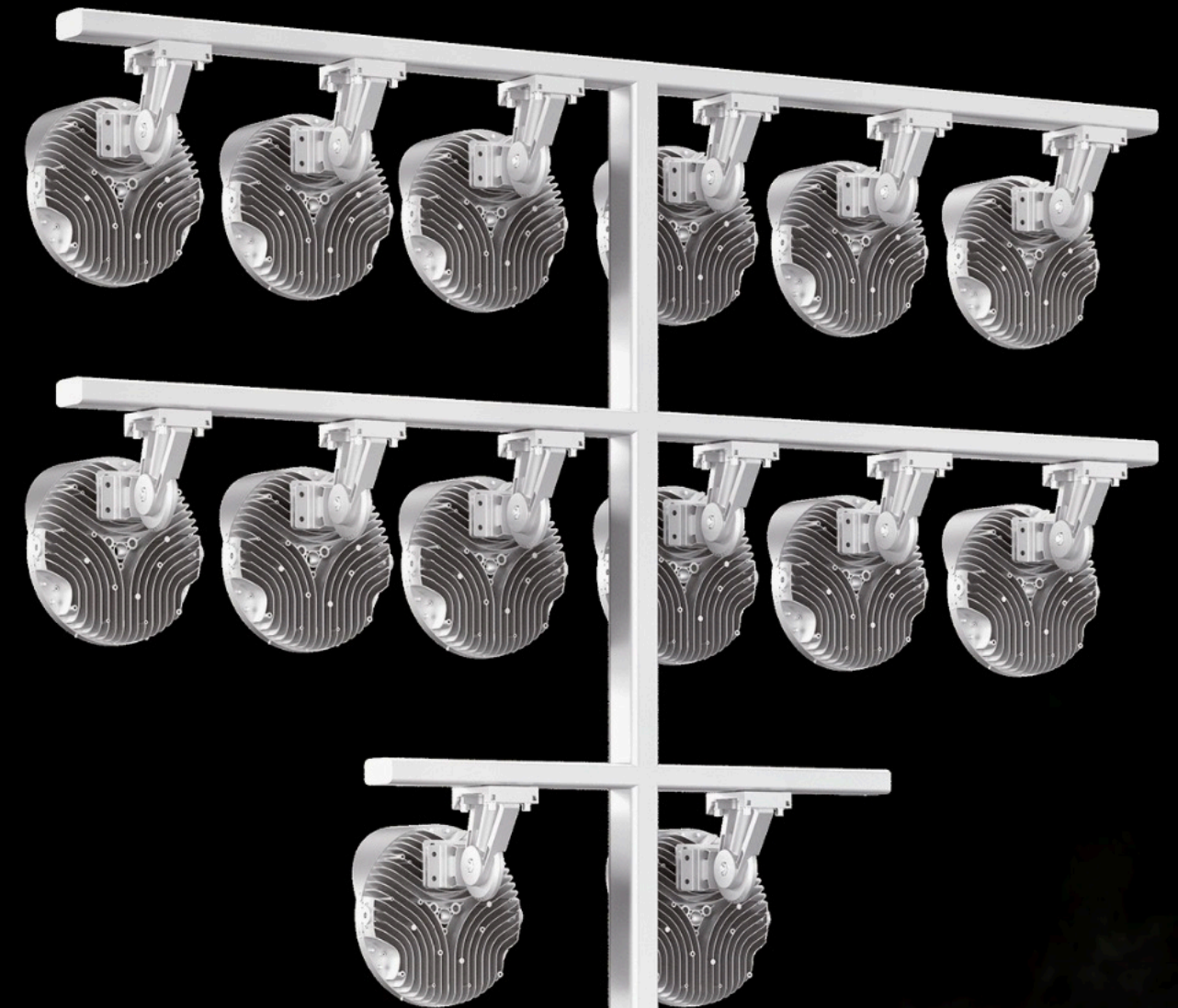
Baseball Field

For baseball/softball fields, our ARES sports light is an ideal choice.

With optimal optics, it increases foot-candle on the ground and provides uniform lighting. The fixture's size and weight are minimized to retrofit existing Metal Halide fixtures.

Our multi-purpose bracket saves labor, especially when retrofitting old fixtures without changing the cross-arm and poles.

The driver gear can be mounted on fixtures or remotely, eliminating the need to revise existing electrical circuits and accessories.

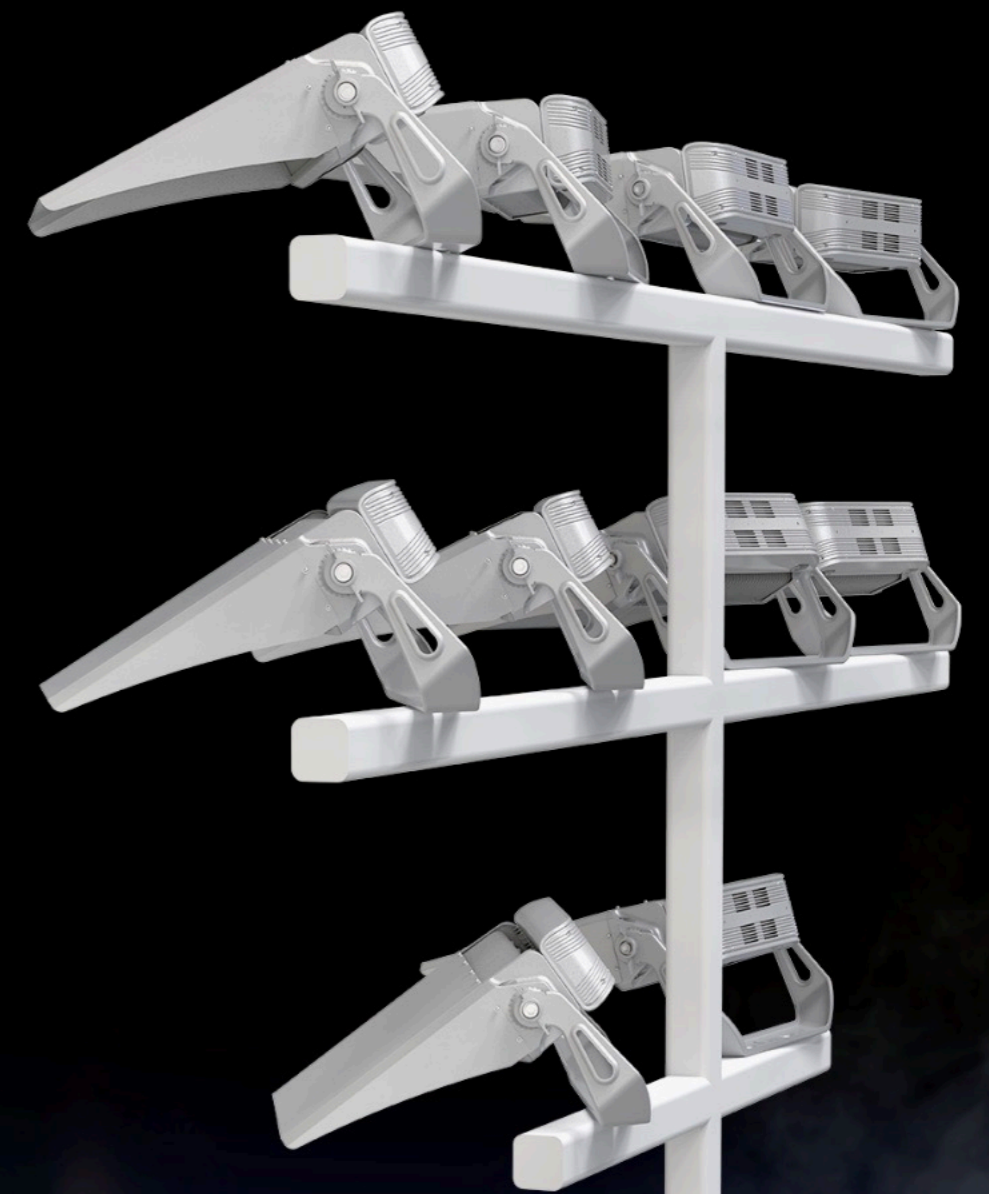


Football Field

For football fields, our APOLLO G3 luminaire is professionally designed for efficient lighting that is neighborhood-friendly, without any spill light or sky glow. Special visors control upward lighting, meeting different event lighting standards.

APOLLO G3 is well-suited for communities, schools, colleges, universities, and even large-scale games like NFL. Our lighting solutions are tailored to satisfy player, spectator, community, and environmental requirements, providing the best lighting solution for your sports field.

Our lighting solutions ensure reliable performance with excellent light uniformity, enhancing visibility and efficiency on the ground. Our customized light control system improves lighting quality and reduces installation, labor, and maintenance costs.



Basketball Court

Regarding basketball courts, LED fixtures must withstand harsh outdoor conditions such as rain, dust, and wind. To ensure safety, the fixtures should be both dustproof and waterproof.

Excessive lighting can also be an issue if the glare is not controlled. It is essential to reduce light pollution to safeguard people's well-being. Meeting certain CRI, CCT, uniformity, and flicker requirements is crucial for outdoor basketball courts.

The ATHENA AFL18, with its IP66 design and spill light control lens, is an excellent choice for lighting outdoor basketball courts.



Indoor Arena

Indoor arenas, on the other hand, have higher requirements for color rendering index and glare because they typically have more spectators. Broadcasts of games on TV also need a high uniformity to achieve a desirable effect. The camera is sensitive to the flicker rate, so there are specific requirements for it.

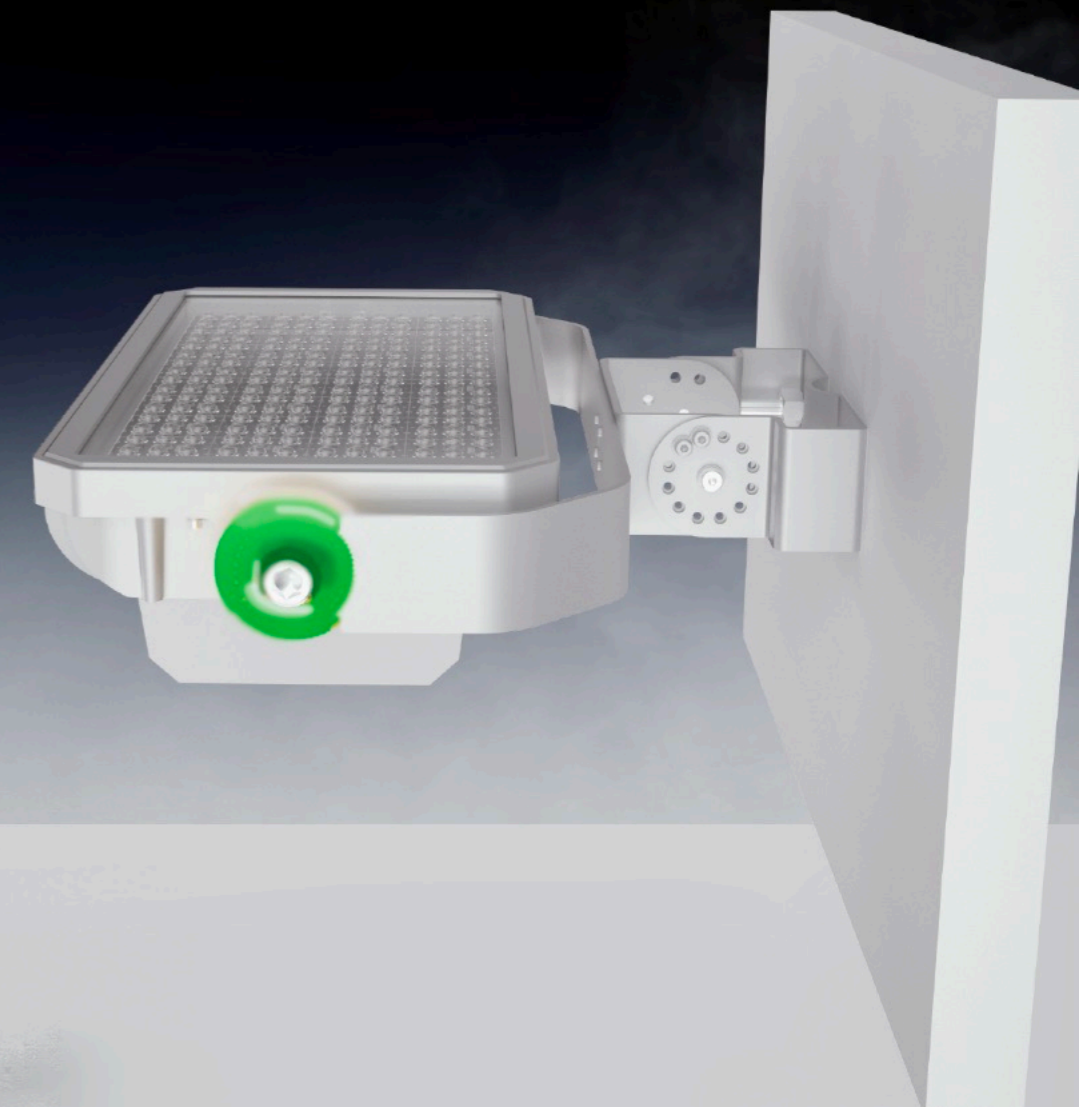
The ARES ASP04 satisfies all these requirements with its top LED chips and lens design.



Ice Hockey Arena

The ATHENA AFL18 and ARES ASP04, with the perfect lighting distribution design and well-known brand LED chips, achieve the required luminous intensity for ice hockey arenas. It also has the correct uniformity distribution to avoid affecting the players' performance.

The ATHENA AFL18 range of color temperature is between 4000-6500K, and the range of CRI is between 70-90Ra, which matches the higher color temperature and CRI values required by TV-level ice hockey arenas. It is an eco-friendly solution that minimizes electricity bills while providing sound anti-glare effects and long service life.



Tennis Court

EcoSport's "forward throw" optics are designed for tennis courts, projecting light forward onto the court instead of under the pole. This design ensures uniform illumination across the court, reducing the need for additional sports lights. EcoSport offers cost-effective and high-performance options suitable for schools and recreational facilities. Its 0° tilt angle installation solution, combined with anti-glare technology, provides a safe and comfortable environment for both players and audiences, protecting their eyes from any glare or discomfort.



Airport Apron

Looking for top-quality lighting solutions? Look no further than EcoSports's APOLLO G3, a hot-selling product ideal for airport lighting. Its rotatable module design, asymmetric light pattern, and visor can be installed at 0° tilt, resulting in no upward light and a safer sky over the airport. Its high lumen output means it achieves the same required illuminance with fewer lamps, reducing costs. And, despite its small size and lightweight, it can be installed at great heights with minimal wind resistance.



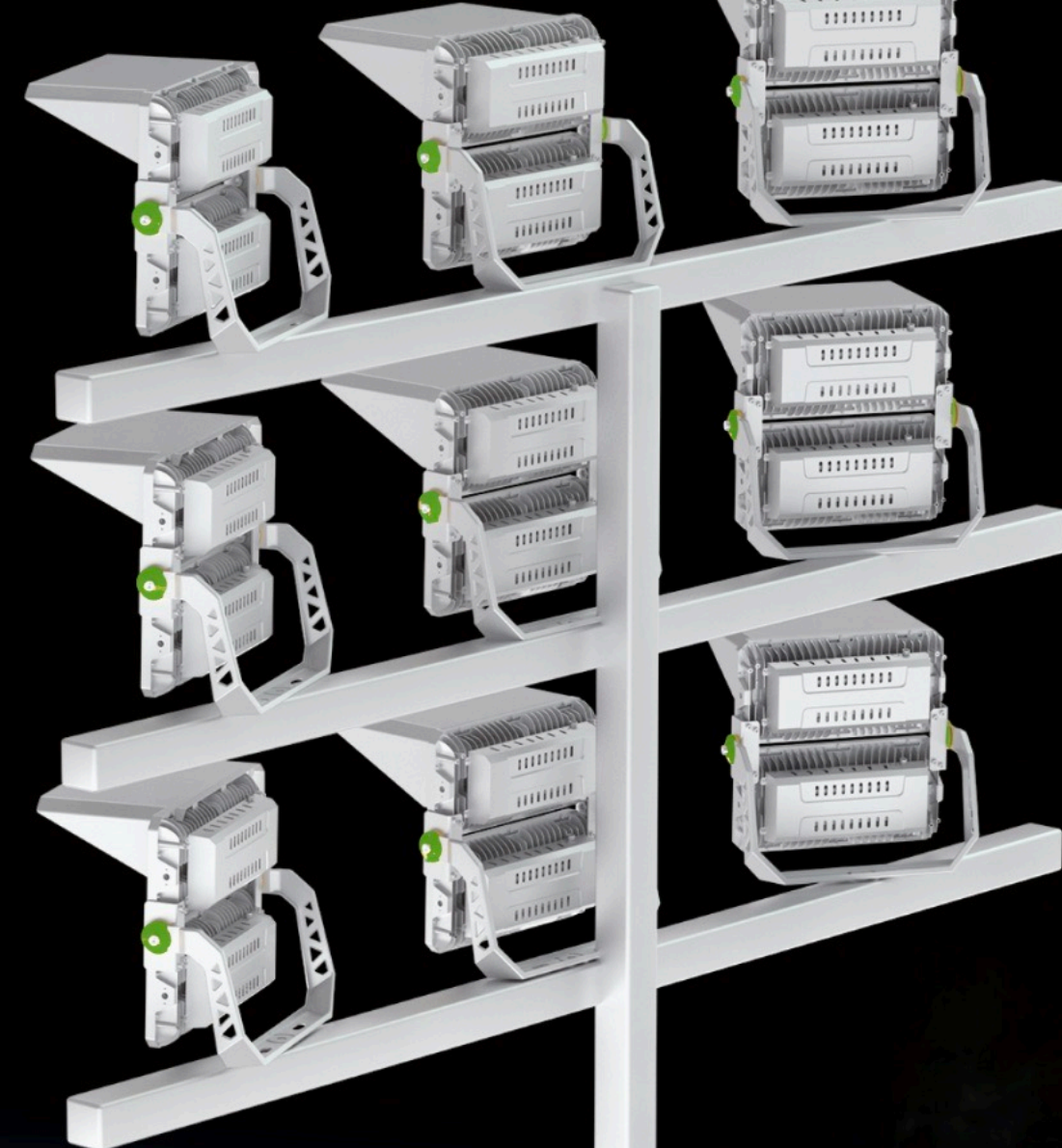
Warf

For efficient wharf port lighting, try ATHENA AFL18 floodlights. They offer perfect light distribution, eliminating shadow areas and promoting safety for wharves and commercial ports. AFL18 is also protected by glass and marine-grade anti-corrosion coating, ensuring long-lasting LED fixtures with reduced maintenance and labor costs.



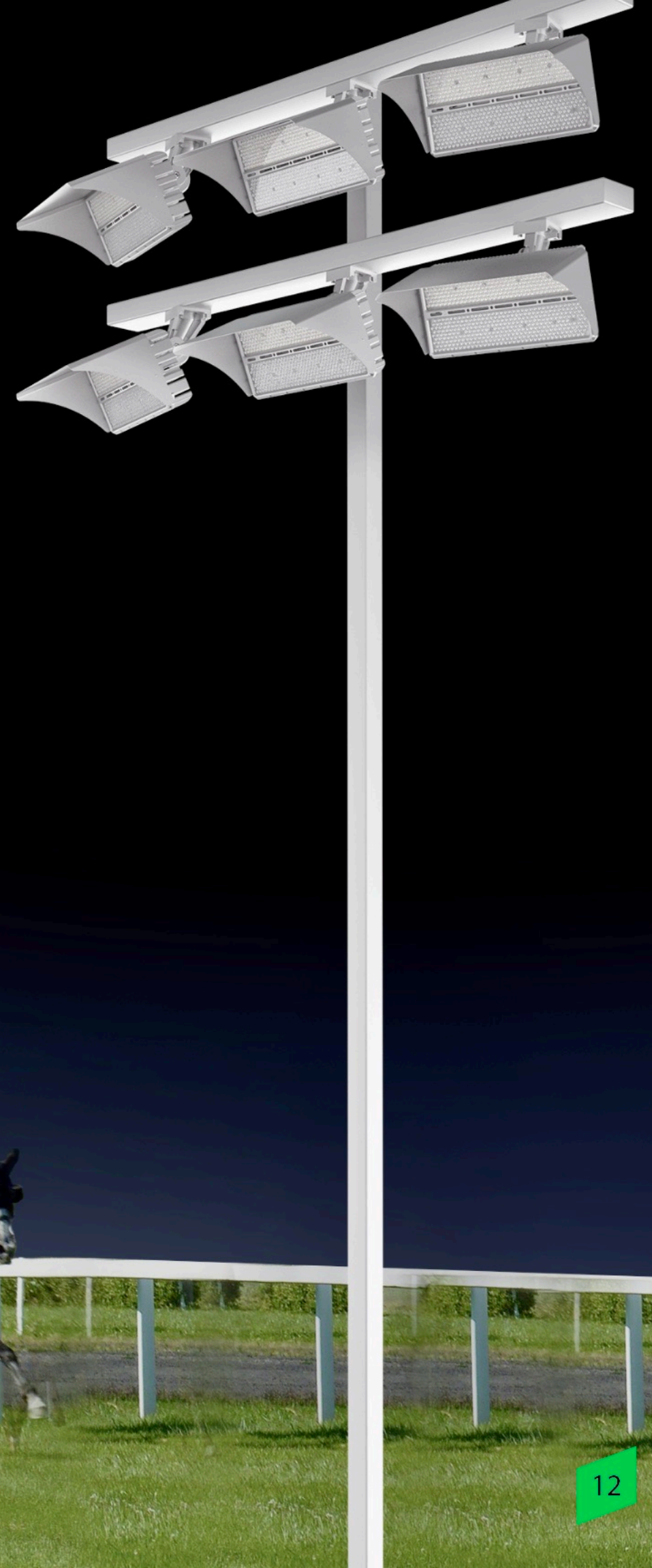
Ski Slope

ATHENA AFL18 is a perfect choice for lighting a ski slope. It can withstand harsh environments, provides high uniformity in light distribution, and reduces shadow areas, providing glare-free illumination for athletes and spectators. And, with its excellent quality and reduced maintenance costs, it's an intelligent choice for clubs looking to attract more customers.



Horse Racing Track

When it comes to horse racing tracks, uniform background lighting is crucial. APOLLO G3 from EcoLite provides <math><1\%</math> flicker and precise light control, ensuring proper vertical illumination for photo finish cameras and minimizing glare into the jockey's eyes. It brings the entire racetrack to life at night, enhancing the race atmosphere and drawing more spectators.



Aquatic Facility

Both ARES and ATHENA lighting options are suitable for indoor swimming pools, providing downward lighting from the top and upward lighting from the ground. Among these options, ARES performs exceptionally well due to its high corrosion-resistant spray coating, prolonging the life of the LED fixtures, and anti-glare cover, preventing swimmers from experiencing discomfort.



Golf Driving Range

For golf courses, AFL09 APOLLO G3 is equipped with high uniformity and flicker-free lighting, allowing speed cameras to capture the movement of golf balls and clubs. It is available in various color temperatures and has a high color rendering index, highlighting the golf ball and creating a contrast between dark environments and grass surfaces. AFL09 APOLLO G3 also has lightning protection, making it ideal for outdoor use in bad weather



Soccer Fields

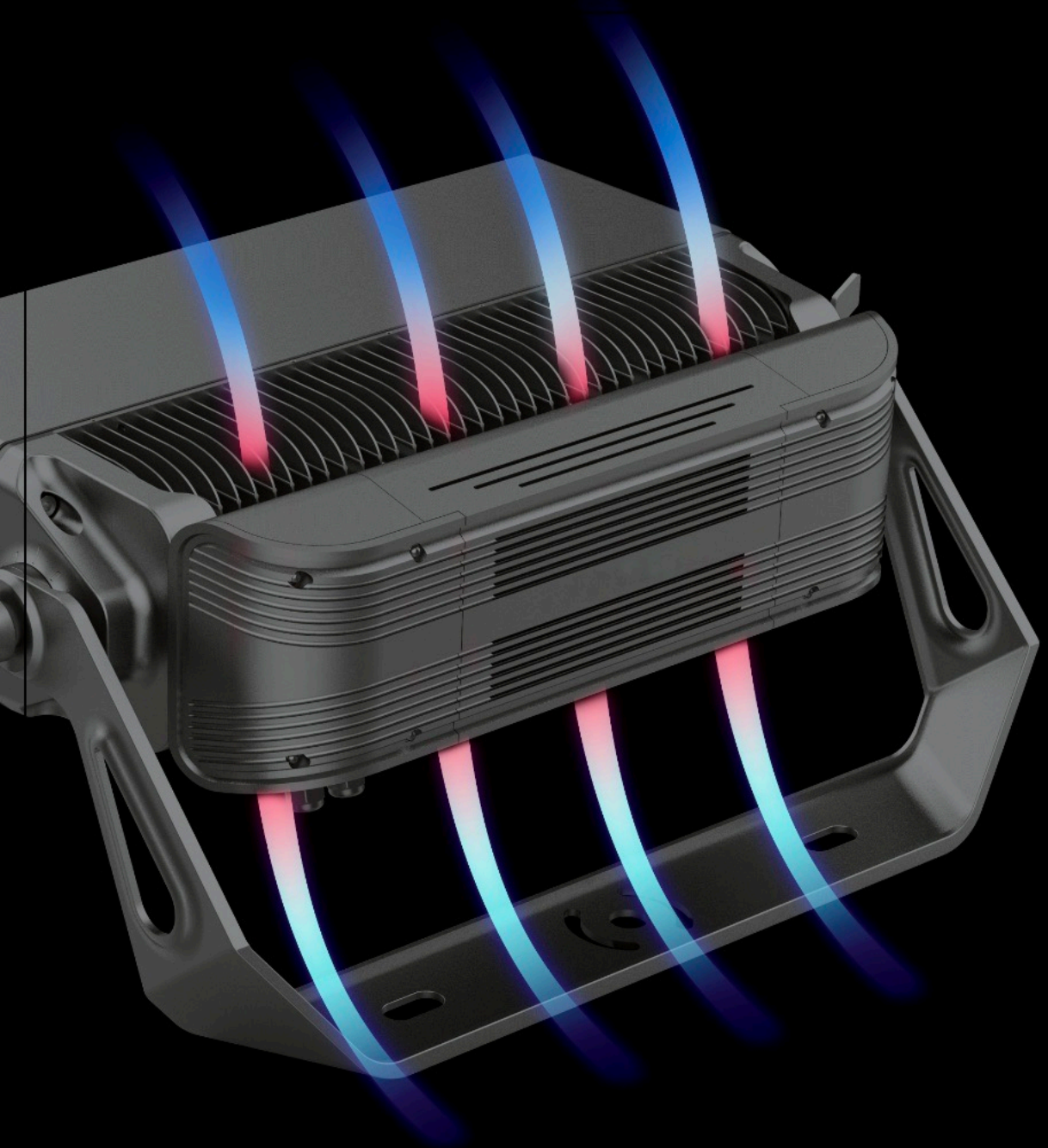
For soccer fields, EcoSport's ATHENA AFL18 Flood Light is a professional lighting solution that meets all the requirements of UEFA/FIFA/Olympic standards. It provides sufficient illumination with less glare effect and excellent vertical and horizontal illuminance uniformity. With a high TLCI index and flicker-free lighting, it fits all demands of television broadcasters. EcoSport LED Lighting Solutions are also easy to control, available with DMX, DALI, and 0-10V dimming, making it possible to create smart stadiums that are flexible and emotional.



Ice Hockey Arena

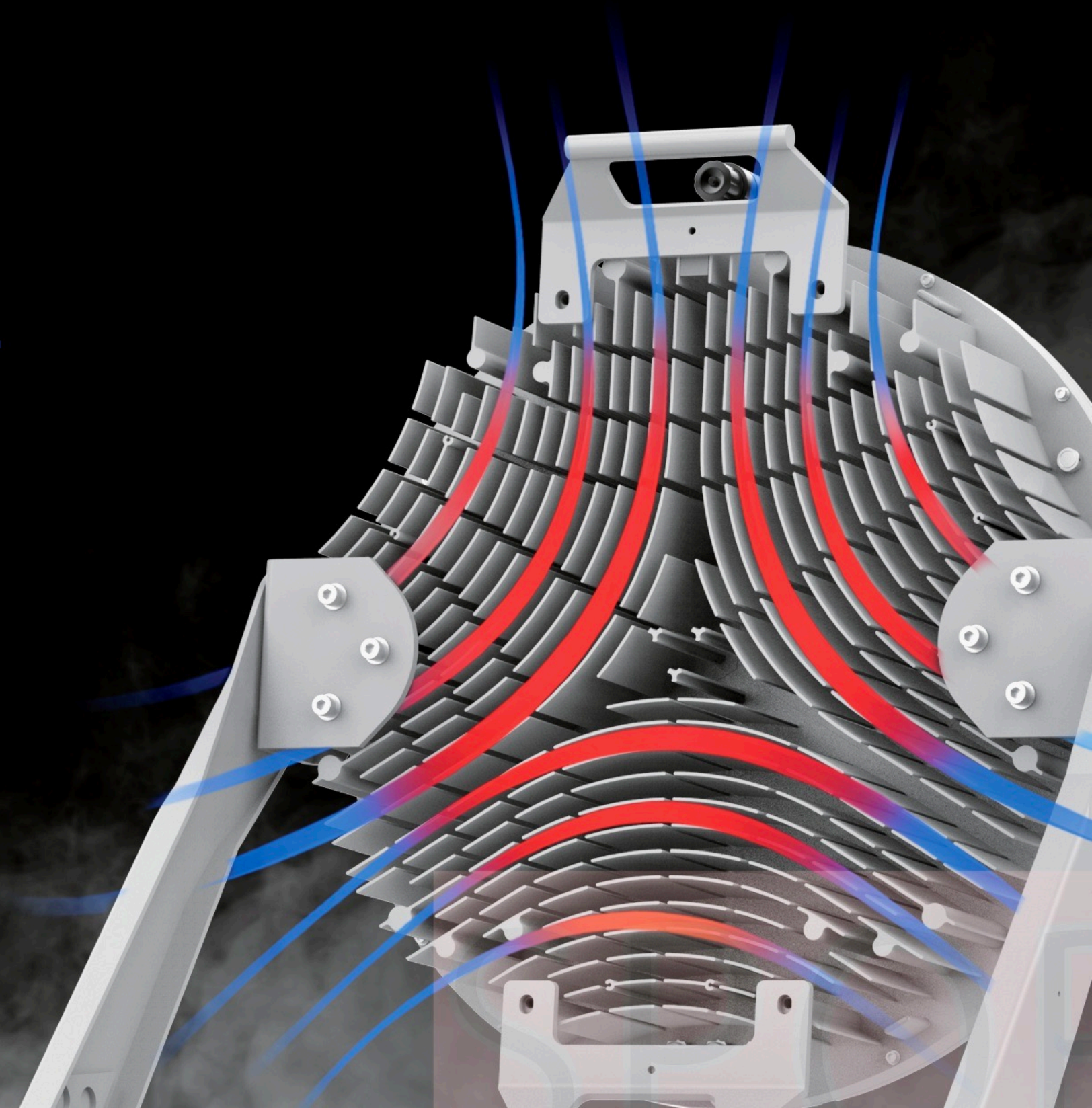
Looking for high-quality lighting for your stadium or arena? Look no further than EcoSport RGB W/A lights! These lights can illuminate distances of up to 100 meters, and their RGB W/A feature allows for a variety of different lighting effects, making them perfect for any event or game. But the benefits of these lights continue. They're also incredibly energy-efficient, using the latest LED technology to minimize power consumption and reduce energy bills. They're built to last, too, with durable materials and weather-resistant designs that ensure they'll continue to perform even in the most challenging conditions.





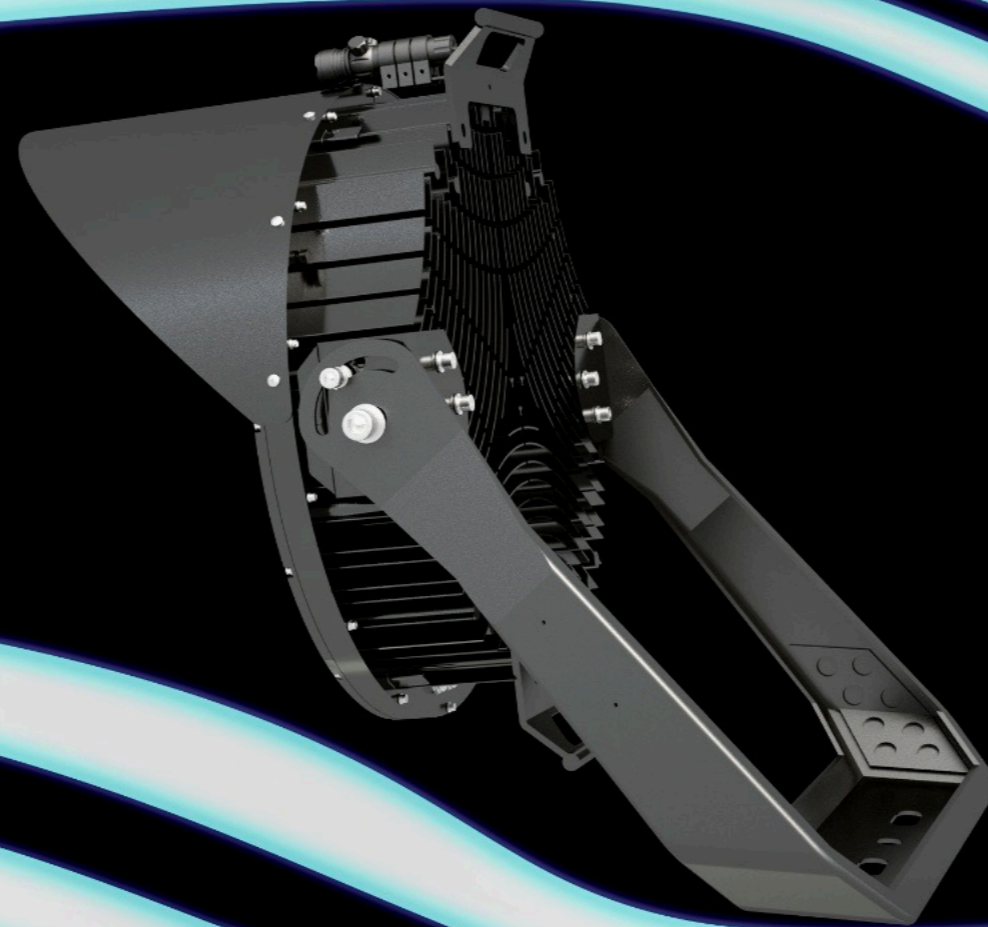
Cooling System

Regarding cooling, EcoSport's stadium lights use a convection design equivalent to the air circulation principle for heat dissipation. This means that heat is distributed throughout the heat sink, with hotter temperatures towards the source and cooler temperatures towards the end.



EPA

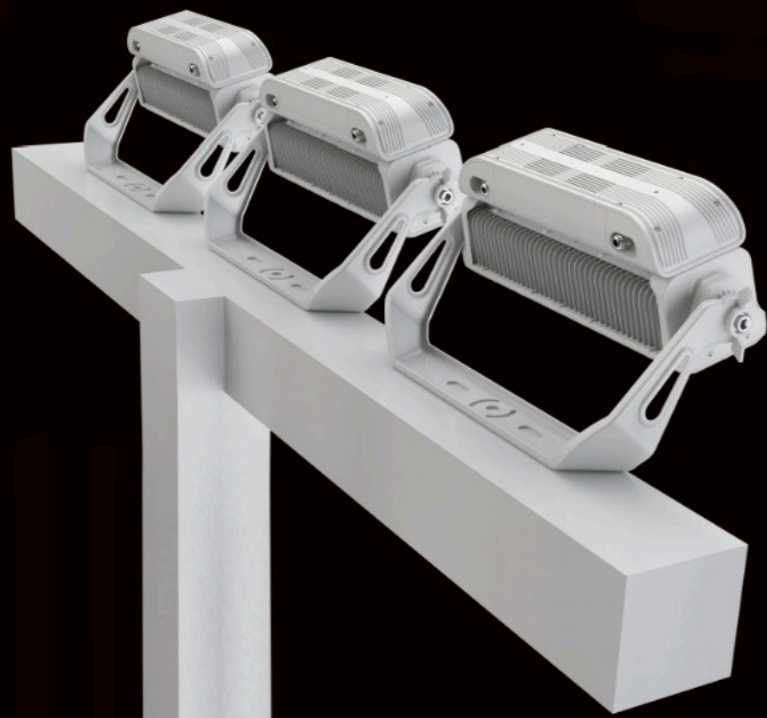
For areas prone to high wind pressures, the ARES ASP04 offers exceptional wind resistance capabilities, with a low EPA wind rating that ensures maximum safety and durability in challenging environments.



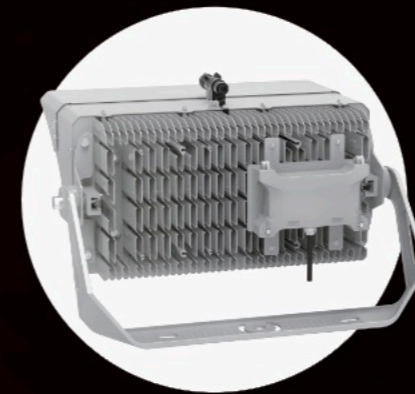
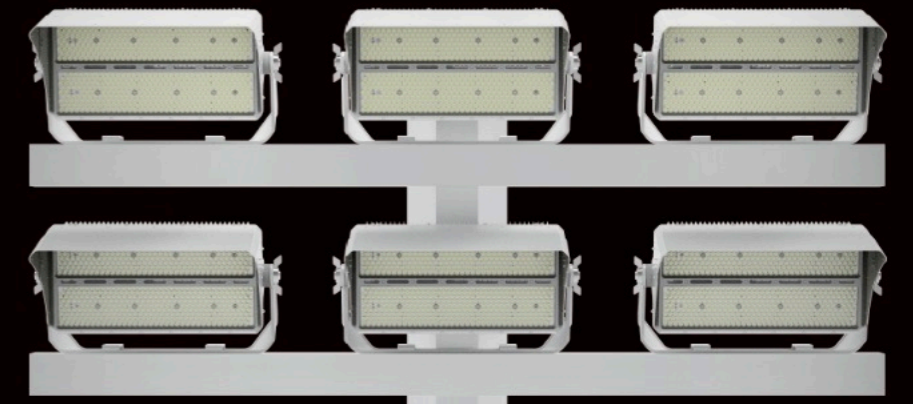
Lighting Control System

And with our advanced lighting control system, you can reduce labor costs and save installation costs and time. It's compatible with DALI and DMX functions and can be controlled remotely for real-time monitoring and defective alarm functions.

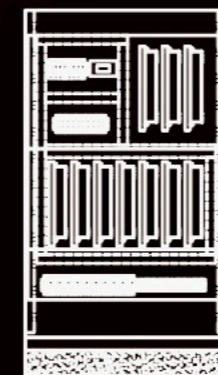
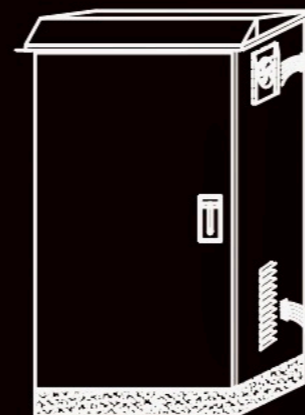




Remote Control Solution



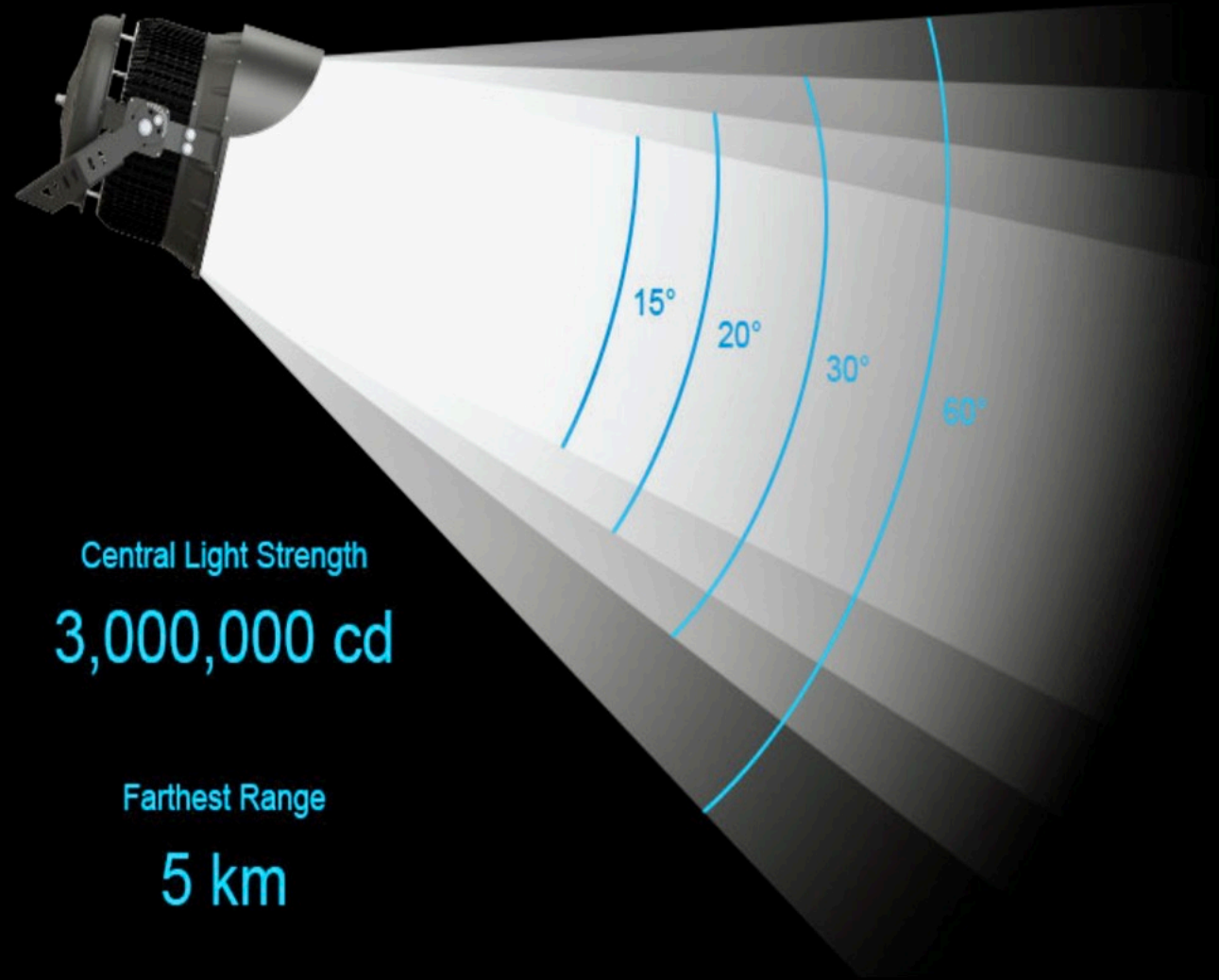
Integral Driver Solution



Advantages of EcoSport Optics

Lorem ipsum

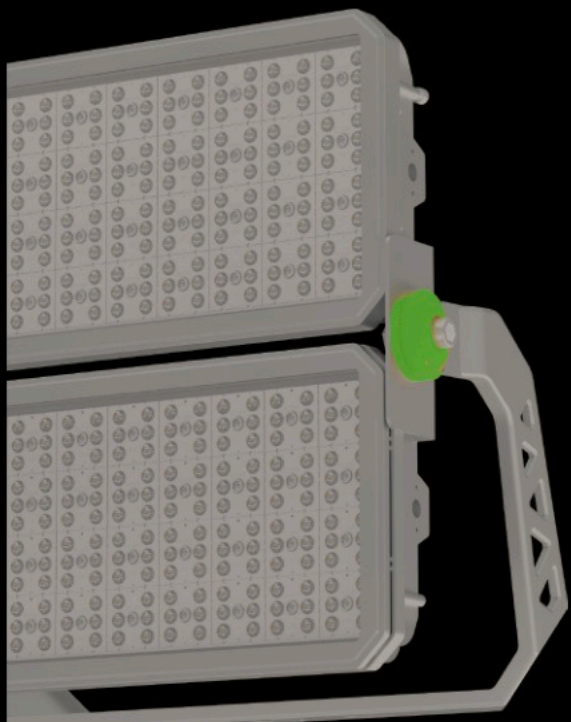
- At EcoSport, we take pride in our product's many advantages. Our large-size modules feature an accurate asymmetrical design that effectively controls BUG parameters and improves light utilization. We offer multiple light distribution design options, allowing for the design of polarized light at 45/50/55/60 degrees, making it versatile for various occasions. Our fixture for the optical module is designed to be beautiful and generous while reducing assembly errors and improving accuracy.
- Our ultra-small angle of 10 degrees allows for long-distance lighting on high poles, and adding an optically effective rear light-cutting surface reduces polluted light for stadium lighting. We are committed to researching excellent optics for controlling glare and spill light, ensuring that athletes can compete in the best conditions.
- Our sports lighting provides the ideal environment for athletes and ensures spectators can watch games, scoreboards, video screens, and all activities on the field in a comfortable, glare-free, spill-free state. Our goal is to provide the ultimate visual experience for everyone involved in the game. conditions.



New Sports Floodlight

AFL 18 ATHENA

Finally, our new sports floodlight offers a unique modular design that reduces maintenance costs and makes the stocking easy for distributors. With plug-in connectors on each driver box, versatile optics design, tempered glass protection, and remote driver gear integration, it's the perfect choice for any sports field or stadium.



Lorem ipsum

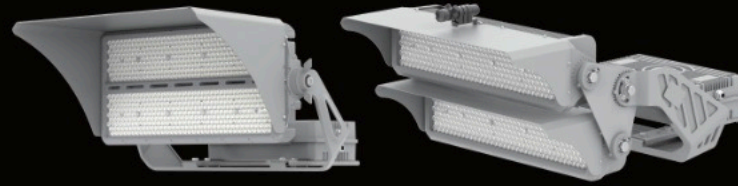


APOLLO G3 AFL09



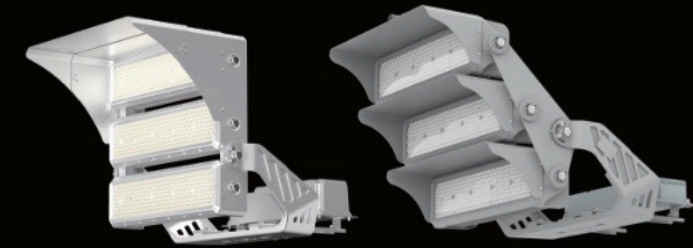
500W 600W 630W

Weight: 18.5kg (Intergrated With Driver Box)
EPA(Front): 1.52ft² EPA(Side): 0.60ft²



750W 900W 1000W 1200W 1500W

Weight: 19.5kg (Remote Mounting Driver Box)
EPA(Front): 2.15ft² EPA(Side): 0.89ft²



1800W

Weight: 33kg (Remote Mounting Driver Box)
EPA(Front): 4.13ft² EPA(Side): 1.56ft²



Yoke Bracket



Knuckle Assembly Bracket

Efficiency: 155lm/W

Light Distribution: Symmetrical And Asymmetrical

Application: Baseball Field, Softball Field, Football Field, Golf Course, Basketball Court, Swimming Pool, Ice Rink

Installation: U Bracket, Knuckle Assembly Bracket, Trunion Mount Kit

ARES ASP04



300W 400W 500W 600W

Weight: 14.5kg (With Driver)
EPA(Front): 1.48ft²



750W 1000W 1200W

Weight: 14.5kg (Without driver)
EPA(Front): 2.35ft²



1500W

Weight: 28.5kg (Without driver)
EPA(Front): 3.66ft²



Trunion Mount Kit



Knuckle Assembly Bracket



Yoke Bracket



Hook Installation



Pipe Installation

Efficiency: 155lm/W

Light distribution: 12°- 80°

Application: Baseball Field, Softball Field, Football Field, Golf Course, Basketball Court, Swimming Pool, Ice Rink

Installation: U Bracket, Knuckle Assembly Bracket, Trunion Mount Kit

ATHENA AFL18



400W 500W

Weight: 13kg (With Driver)
EPA(Front): 1.97ft² EPA(Side): 0.60ft²



800W 1000W

Weight: 22kg (With Driver)
EPA(Front): 3.85ft² EPA(Side): 1.00ft²



1200W 1500W

Weight: 31kg (With Driver)
EPA(Front): 5.60ft² EPA(Side): 1.40ft²



Yoke Bracket



TR Bracket

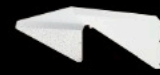
Efficiency: 165lm/W

Light distribution: Symmetrical And Asymmetrical

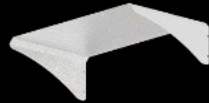
Application: Baseball Field, Softball Field, Football Field, Golf Course, Basketball Court, Tennis Court, Wharf, Airport

ACCESSORIES

AFL18



Visor



Visor



Laser Aiming Device

AFL09



SF Bracket



Laser Aiming Device



Metal Pipe



Knuckle Assy Bracket



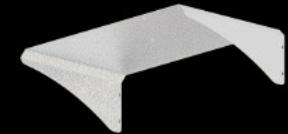
Glass



Grill



Visor



Visor

ASP04



Laser Aiming Device



Knuckle Assy Bracket



Glass



Anti-Glare Ring

ASP03



SF Bracket



Anti-Glare Ring



Laser Aiming Device

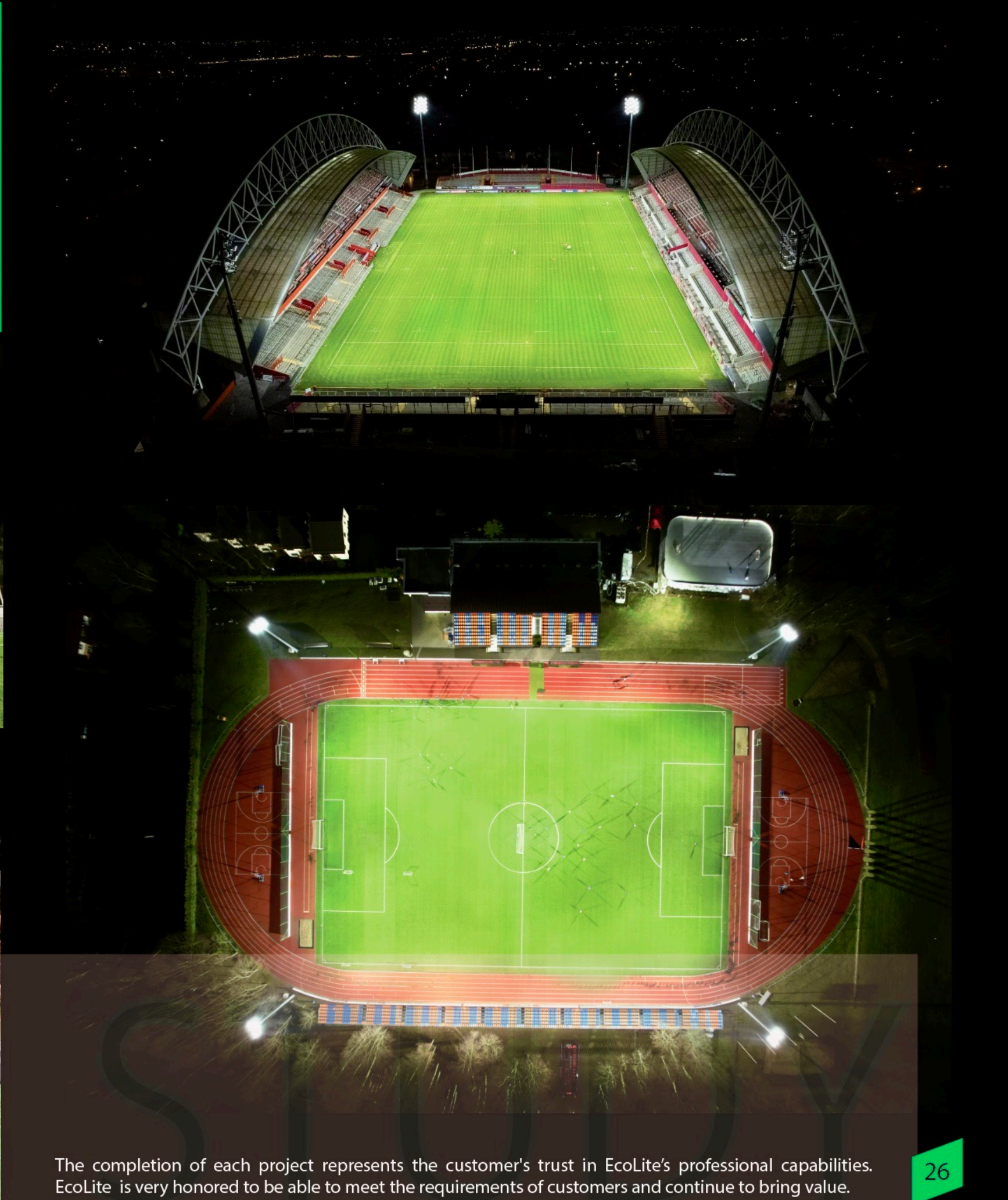


Knuckle Assy Bracket





EcoSport™
PERFORMANCE *NOT PROMISES*
CASE STUDIES



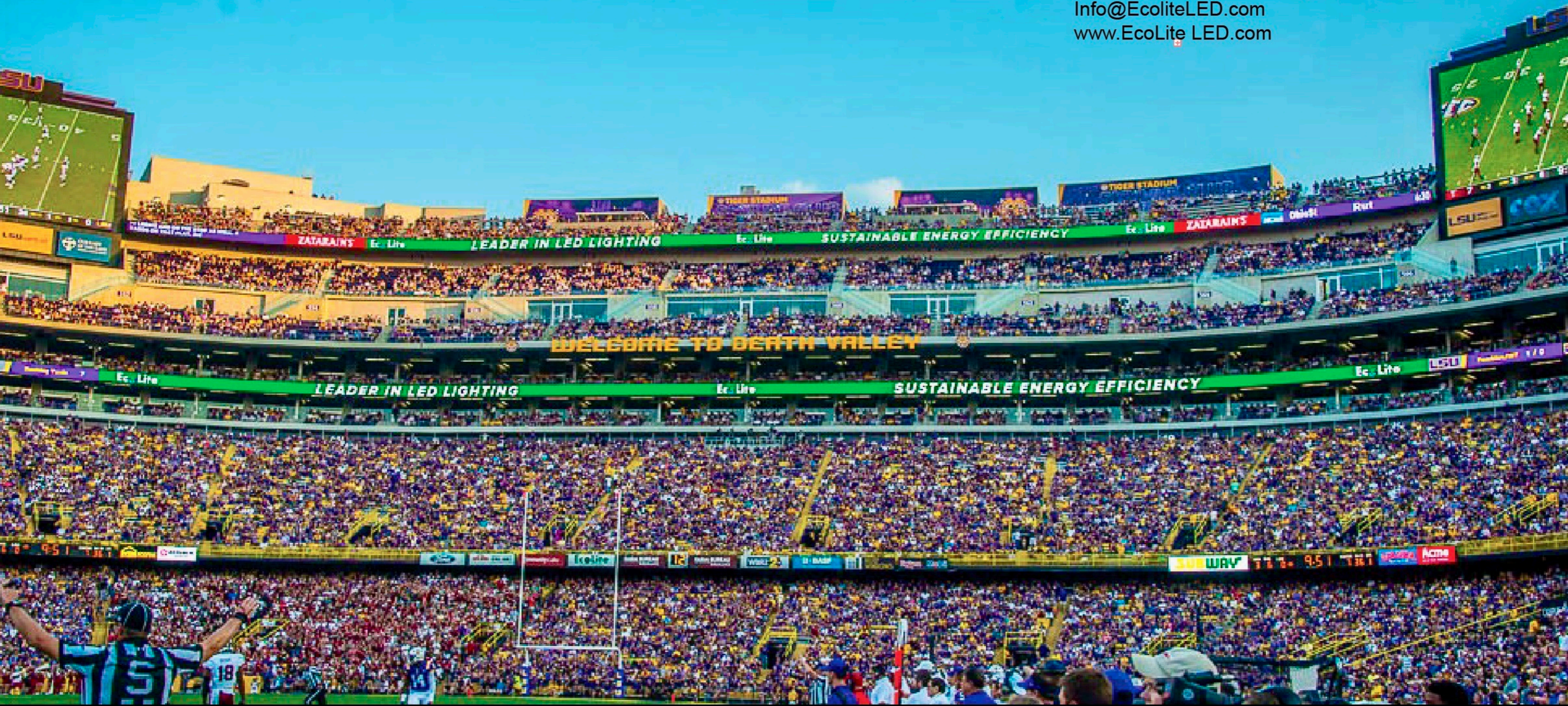
The completion of each project represents the customer's trust in EcoLite's professional capabilities. EcoLite is very honored to be able to meet the requirements of customers and continue to bring value.

EcoSport™

PERFORMANCE *NOT PROMISES*

EcoLite LED Corporate
7910 Wrenwood Blvd. Suite B
Baton Rouge, LA 70809

844.LED.SWAP (533.7927)
Info@EcoliteLED.com
www.EcoLiteLED.com



CORPORATE OFFICES: BATON ROUGE, LA - CARROLLTON, TX - SOMERSET, NJ - STATESVILLE, NC

The EcoLite LED warranty program admin. by Trinity Warranty Solutions, LLC. 150 Pierce Rd Suite 600 Itasca, IL 60143
underwritten by AVIVA PLC St. Helen's London, UK. AVIVA PLC St. Helen's London, UK.

