



LED AREA LIGHT WITH Q-BASE AND PHOTOCELL

PRO series

► **DESIGN** - LED AREA LIGHT WITH Q-BASE AND PHOTOCELL is highly efficient with a 170lm/W output. With 10kV surge protection and a 0-10V dimmable driver. The built-in motion sensor base allows you to install the microwave or PIR motion sensor. Integrated photocell switches the fixture on at night time. The photocell can be disabled with built-in switch.

► **VARIETY** - Fixture is designed to operate on 120-277V or 200-480V circuits (depending on model) and is available in White, Black, Silver or Bronze finishes.

► **PHOTOCELL** - The built-in Dusk to Dawn Photocell will automatically activate/deactivate the fixture depending on the time of day. The photocell can be disabled with on-off switch.

► **COLOR SELECTABLE** - You can choose between 3,000 K warm white, 4,000 K cool white, and 5,000 K daylight white color temperatures.

► **INSTALLATION** - The fixture can be mounted to a junction box or directly to a wall. Perfect commercial or industrial solution for outdoor security lighting, wall perimeter lighting, garages, large backyards, warehouses, hotels, and many other applications. It is also Wet Locations rated.

► **ADVANTAGES** - With calculated lifespan up to 145 000 hours, these fixtures are made to last decades under normal operation! ASD provides a 5-year limited warranty along with UL and DLC Premium certifications to guarantee top quality products and safety!



Model	Power	Sensor base	Voltage	Dimming	Lumens	CCT	Finish	Dimensions	Option	Feature	Certification	
LSB5B-PRO 120-277V 170lm/W												
ASD-LSB5B-PRO-150WH	100/120/150 W	3-pin	120-277V	0-10V	25,480lm	3,000/4,000/5,000K	White	12-5/16' x 11-5/16' x 2-7/16'	Photocell	Cord 3.9 ft	UL(E473804), DLC Premium	
ASD-LSB5B-PRO-150SL	100/120/150 W	3-pin	120-277V	0-10V	25,480lm	3,000/4,000/5,000K	Silver	12-5/16' x 11-5/16' x 2-7/16'	Photocell	Cord 3.9 ft	UL(E473804), DLC Premium	
ASD-LSB5B-PRO-150BR	100/120/150 W	3-pin	120-277V	0-10V	25,480lm	3,000/4,000/5,000K	Bronze	12-5/16' x 11-5/16' x 2-7/16'	Photocell	Cord 3.9 ft	UL(E473804), DLC Premium	
ASD-LSB5B-PRO-150BK	100/120/150 W	3-pin	120-277V	0-10V	25,480lm	3,000/4,000/5,000K	Black	12-5/16' x 11-5/16' x 2-7/16'	Photocell	Cord 3.9 ft	UL(E473804), DLC Premium	
ASD-LSB5B-PRO-200BR	100/150/200 W	3-pin	120-277V	0-10V	33,541lm	3,000/4,000/5,000K	Bronze	12-5/16' x 11-5/16' x 2-7/16'	Photocell	Cord 3.9 ft	UL(E473804), DLC Premium	
ASD-LSB5B-PRO-240BR	150/200/240 W	3-pin	120-277V	0-10V	40,208lm	3,000/4,000/5,000K	Bronze	16-9/16' x 12-3/16' x 2-1/2"	Photocell	Cord 3.9 ft	UL(E473804), DLC Premium	
ASD-LSB5B-PRO-300WH	200/240/300 W	3-pin	120-277V	0-10V	52,312lm	3,000/4,000/5,000K	White	16-9/16' x 12-3/16' x 2-1/2"	Photocell	Cord 3.9 ft	UL(E473804), DLC Premium	
ASD-LSB5B-PRO-300SL	200/240/300 W	3-pin	120-277V	0-10V	52,312lm	3,000/4,000/5,000K	Silver	16-9/16' x 12-3/16' x 2-1/2"	Photocell	Cord 3.9 ft	UL(E473804), DLC Premium	
ASD-LSB5B-PRO-300BR	200/240/300 W	3-pin	120-277V	0-10V	52,312lm	3,000/4,000/5,000K	Bronze	16-9/16' x 12-3/16' x 2-1/2"	Photocell	Cord 3.9 ft	UL(E473804), DLC Premium	
ASD-LSB5B-PRO-300BK	200/240/300 W	3-pin	120-277V	0-10V	52,312lm	3,000/4,000/5,000K	Black	16-9/16' x 12-3/16' x 2-1/2"	Photocell	Cord 3.9 ft	UL(E473804), DLC Premium	
ASD-LSB5B-PRO-500BR	300/400/500 W	3-pin	120-277V	0-10V	84,993lm	3,000/4,000/5,000K	Bronze	29-7/16' x 12-3/16' x 2-3/4"	Photocell	Cord 3.9 ft	UL(E473804), DLC Premium	
LSB5BHV-PRO 200-480V 170lm/W												
ASD-LSB5BHV-PRO-150BR	100/120/150 W	3-pin	200-480V	0-10V	25,063lm	3,000/4,000/5,000K	Bronze	12-5/16' x 11-5/16' x 2-7/16'	Photocell	Cord 3.9 ft	UL(E473804), DLC Premium	
ASD-LSB5BHV-PRO-200BR	100/150/200 W	3-pin	200-480V	0-10V	35,081lm	3,000/4,000/5,000K	Bronze	12-5/16' x 11-5/16' x 2-7/16'	Photocell	Cord 3.9 ft	UL(E473804), DLC Premium	
ASD-LSB5BHV-PRO-240BR	150/200/240 W	3-pin	200-480V	0-10V	41,003lm	3,000/4,000/5,000K	Bronze	16-9/16' x 12-3/16' x 2-1/2"	Photocell	Cord 3.9 ft	UL(E473804), DLC Premium	
ASD-LSB5BHV-PRO-300SL	200/240/300 W	3-pin	200-480V	0-10V	52,156lm	3,000/4,000/5,000K	Silver	16-9/16' x 12-3/16' x 2-1/2"	Photocell	Cord 3.9 ft	UL(E473804), DLC Premium	
ASD-LSB5BHV-PRO-300BR	200/240/300 W	3-pin	200-480V	0-10V	52,156lm	3,000/4,000/5,000K	Bronze	16-9/16' x 12-3/16' x 2-1/2"	Photocell	Cord 3.9 ft	UL(E473804), DLC Premium	
ASD-LSB5BHV-PRO-500BR	300/400/500 W	3-pin	200-480V	0-10V	86,367lm	3,000/4,000/5,000K	Bronze	29-7/16' x 12-3/16' x 2-3/4"	Photocell	Cord 3.9 ft	UL(E473804), DLC Premium	
SENSORS AND REMOTE												
ASD-09MW-WH	Microwave motion sensor 3pin white								2-1/8' x 2-1/8' x 1-5/16'	-	-	-
ASD-09MW-BK	Microwave motion sensor 3pin black								2-1/8' x 2-1/8' x 1-5/16'	-	-	-
ASD-09IR-WH	Infrared motion sensor 3pin 39 ft white								2-1/8' x 2-1/8' x 1-11/16'	-	-	-
ASD-09IR-BK	Infrared motion sensor 3pin 39 ft black								2-1/8' x 2-1/8' x 1-11/16'	-	-	-
ASD-09IR50-WH	Infrared motion sensor 3pin 50 ft white								2-1/8' x 2-1/8' x 1-11/16'	-	-	-
ASD-06RC	Remote control for motion sensor								5-11/16' x 1-3/4' x 13/16'	-	-	-

For detailed luminous flux information please refer to Annex 1, page 10.

For most up-to-date spec sheets please refer to asd-lighting.com









LED AREA LIGHT WITH Q-BASE AND PHOTOCELL

PRO series

TECHNICAL PARAMETERS:

Model	Max input current	Inrush current	Work environment	Operating temperature	Power factor	Surge protection	Housing	Lens	CRI
LSB5B-PRO 120-277V 170lm/W									
ASD-LSB5B-PRO-150WH	1,7A	60A	Wet location	-40°F to 122°F(-40°C to 50°C)	>0,9	6kV	Aluminum	PC	>80
ASD-LSB5B-PRO-150SL	1,7A	60A	Wet location	-40°F to 122°F(-40°C to 50°C)	>0,9	6kV	Aluminum	PC	>80
ASD-LSB5B-PRO-150BR	1,7A	60A	Wet location	-40°F to 122°F(-40°C to 50°C)	>0,9	6kV	Aluminum	PC	>70
ASD-LSB5B-PRO-150BK	1,7A	60A	Wet location	-40°F to 122°F(-40°C to 50°C)	>0,9	6kV	Aluminum	PC	>70
ASD-LSB5B-PRO-200BR	2,2A	60A	Wet location	-40°F to 122°F(-40°C to 50°C)	>0,9	6kV	Aluminum	PC	>70
ASD-LSB5B-PRO-240BR	2,7A	60A	Wet location	-40°F to 122°F(-40°C to 50°C)	>0,9	6kV	Aluminum	PC	>70
ASD-LSB5B-PRO-300WH	3,4A	80A	Wet location	-40°F to 122°F(-40°C to 50°C)	>0,9	6kV	Aluminum	PC	>70
ASD-LSB5B-PRO-300SL	3,4A	80A	Wet location	-40°F to 122°F(-40°C to 50°C)	>0,9	6kV	Aluminum	PC	>70
ASD-LSB5B-PRO-300BR	3,4A	80A	Wet location	-40°F to 122°F(-40°C to 50°C)	>0,9	6kV	Aluminum	PC	>70
ASD-LSB5B-PRO-300BK	3,4A	80A	Wet location	-40°F to 122°F(-40°C to 50°C)	>0,9	6kV	Aluminum	PC	>70
ASD-LSB5B-PRO-500BR	5,6A	60A	Wet location	-40°F to 122°F(-40°C to 50°C)	>0,9	6kV	Aluminum	PC	>70
LSB5BHV-PRO 200-480V 170lm/W									
ASD-LSB5BHV-PRO-150BR	0,9A	78A	Wet location	-40°F to 122°F(-40°C to 50°C)	>0,9	10kV	Aluminum	PC	>70
ASD-LSB5BHV-PRO-200BR	1,1A	130A	Wet location	-40°F to 122°F(-40°C to 50°C)	>0,9	10kV	Aluminum	PC	>70
ASD-LSB5BHV-PRO-240BR	1,4A	58A	Wet location	-40°F to 122°F(-40°C to 50°C)	>0,9	10kV	Aluminum	PC	>70
ASD-LSB5BHV-PRO-300SL	1,7A	96A	Wet location	-40°F to 122°F(-40°C to 50°C)	>0,9	10kV	Aluminum	PC	>70
ASD-LSB5BHV-PRO-300BR	1,7A	96A	Wet location	-40°F to 122°F(-40°C to 50°C)	>0,9	10kV	Aluminum	PC	>70
ASD-LSB5BHV-PRO-500BR	2,8A	130A	Wet location	-40°F to 122°F(-40°C to 50°C)	>0,9	10kV	Aluminum	PC	>70

EPA (EFFECTIVE PROJECTED AREA) :

Model	Fixture quantity					
LSB5B-PRO	 Single	 Double 180°	 Double 90°	 Triple 90°	 Triple 120°	 Quad 90°
150-200W	1.16 ft ²	2.32 ft ²	2.32 ft ²	3.48 ft ²	3.48 ft ²	4.64 ft ²
240-300W	1.686 ft ²	3.372 ft ²	3.372 ft ²	5.058 ft ²	5.058 ft ²	6.744 ft ²
500W	2.98 ft ²	5.96 ft ²	5.96 ft ²	8.94 ft ²	8.94 ft ²	11.92 ft ²

DIMMING COMPATIBLE CONTROLS:

Brand	Lutron	Leviton	Eaton
Models	DVCL-153P	IP710-DLZ	SF10P
	NTSTV-DV	DDMX1	
	NTFTV	DDL06	

PACKAGE CONTENTS:

Description	Quantity
LED Area Light with Q-base and photocell	1
Box	1

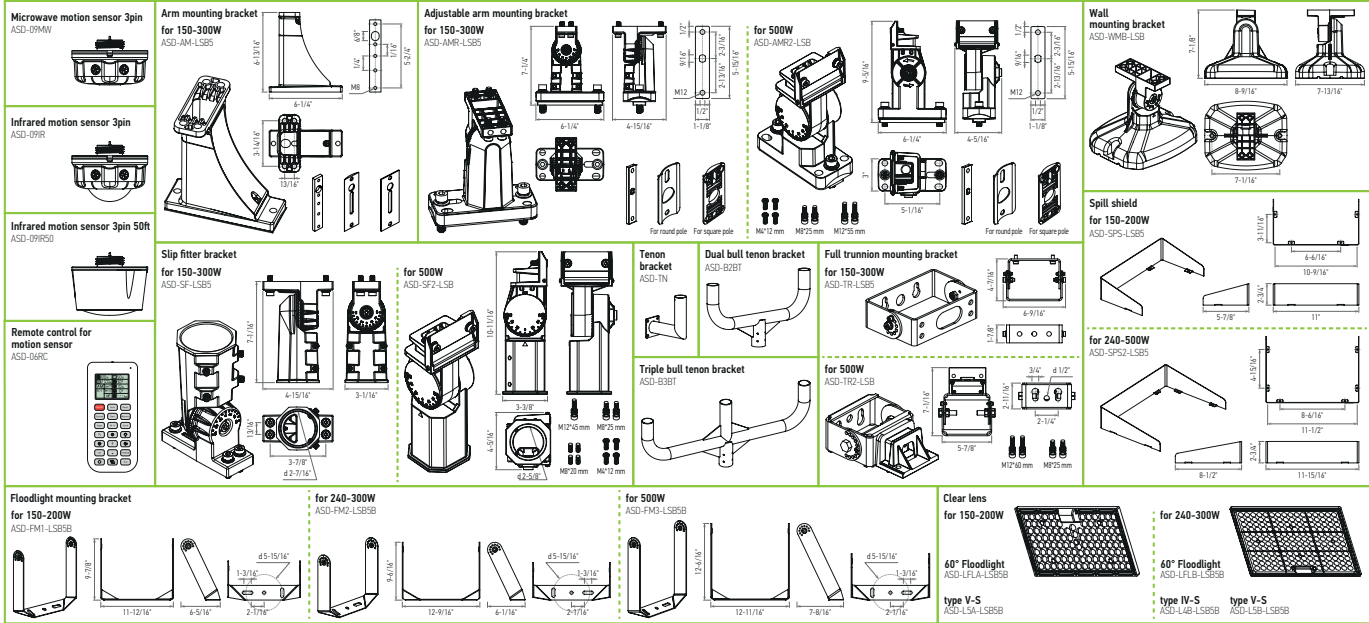
For most up-to-date spec sheets please refer to asd-lighting.com



LED AREA LIGHT WITH Q-BASE AND PHOTOCELL

PRO series

ACCESSORIES (sold separately):



Microwave motion sensor 3pin
ASD-09MW

Infrared motion sensor 3pin
ASD-09IR

Infrared motion sensor 3pin 50R
ASD-09R50

Remote control for motion sensor
ASD-06RC

Arm mounting bracket for 150-300W
ASD-AM-L5B5

Adjustable arm mounting bracket for 150-300W
ASD-AMR-L5B5

Adjustable arm mounting bracket for 500W
ASD-SF2-L5B

Slip fitter bracket for 150-300W
ASD-SF-L5B5

Slip fitter bracket for 500W
ASD-SF2-L5B

Tenon bracket
ASD-TN

Dual bull tenon bracket
ASD-B2BT

Triple bull tenon bracket
ASD-B3BT

Full trunnion mounting bracket for 150-300W
ASD-TR-L5B5

Full trunnion mounting bracket for 500W
ASD-TR2-L5B

Wall mounting bracket
ASD-WMB-L5B

Spill shield for 150-200W
ASD-SPS-L5B5

Spill shield for 240-500W
ASD-SPS2-L5B5

Floodlight mounting bracket for 150-200W
ASD-FM1-L5B5B

Floodlight mounting bracket for 240-300W
ASD-FM2-L5B5B

Floodlight mounting bracket for 500W
ASD-FM3-L5B5B

Clear lens for 150-200W
ASD-LFA-L5B5B

Clear lens for 240-300W
ASD-LFA-L5B5B

Clear lens for 500W
ASD-LFA-L5B5B

ACCESSORY COMPATIBILITY LIST:

Accessories	Models	Accessories																					
		Microwave motion sensor 3pin ASD-09MW	Infrared motion sensor 3pin ASD-09IR, ASD-09R50	Arm mounting bracket ASD-AM-L5B5	Adjustable arm mounting bracket for 150-300W ASD-AMR-L5B5	Adjustable arm mounting bracket for 500W ASD-AMR2-L5B	Slip fitter bracket for 150-300W ASD-SF-L5B5	Slip fitter bracket for 500W ASD-SF2-L5B	Tenon bracket ASD-TN	Dual bull tenon bracket ASD-B2BT	Triple bull tenon bracket ASD-B3BT	Full trunnion mounting bracket for 150-300W ASD-TR-L5B5	Full trunnion mounting bracket for 500W ASD-TR2-L5B	Floodlight mounting bracket for 150-200W ASD-FM1-L5B5B	Floodlight mounting bracket for 240-300W ASD-FM2-L5B5B	Floodlight mounting bracket for 500W ASD-FM3-L5B5B	Wall mounting bracket ASD-WMB-L5B	Spill shield for 150-200W ASD-SPS-L5B5	Spill shield for 240-500W ASD-SPS2-L5B5	Clear lens for 150-200W ASD-LFA-L5B5B	60° Floodlight Clear lens for 150-200W ASD-LFA-L5B5B	Clear lens for 240-500W ASD-LAB-L5B5B, ASD-L5B-L5B5B	60° Floodlight Clear lens for 240-500W ASD-LFLB-L5B5B
ASD-LSB5B/ ASD-LSB5BHV	150W	•	•	•	•	•	•	•	•	•	•	•	•	•	•	•	•	•	•	•	•	•	•
	200W	•	•	•	•	•	•	•	•	•	•	•	•	•	•	•	•	•	•	•	•	•	•
	240W	•	•	•	•	•	•	•	•	•	•	•	•	•	•	•	•	•	•	•	•	•	•
	300W	•	•	•	•	•	•	•	•	•	•	•	•	•	•	•	•	•	•	•	•	•	•
	500W	•	•	•	•	•	•	•	•	•	•	•	•	•	•	•	•	•	•	•	•	•	•

For most up-to-date spec sheets please refer to asd-lighting.com



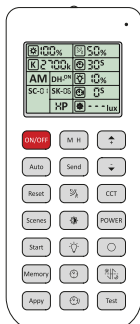


LED AREA LIGHT WITH Q-BASE AND PHOTOCELL

PRO series

MOTION SENSOR INFORMATION

REMOTE CONTROL **ASD-06RC** sold separately



Button	Remarks	Button	Remarks	Button	Remarks
ON/OFF ON/OFF	Turn the sensor ON/OFF.	M H Mounting height	Adjust detection area/sensitivity levels according to real installation situations, higher or lower.	Up	The main functional buttons to adjust the factors to desired level.
Auto Auto	Enter "sensor mode" and perform previous settings.	Send Send	Memorize and send out the previous setting of individual parameters.	Down	Press + - button to dim light directly auto in non-detection mode.
Reset Reset	Enter "sensor mode" and perform the default settings.	% Detection range	Also known as "sensitivity", 100 % means the highest sensitivity and longest distance. Use this button and the + - buttons to adjust.	CCT CCT selectable	Not applicable to this product.
Scenes Scenes	Shows current settings saved in remote.	Daylight sensor	The preset lux level at which motion will be detected. Use this button and the + - buttons to adjust.	POWER Power	Adjust brightness in both ON/OFF mode & sensor mode, minimum 10%, max 100%, each time this button is pressed it changes by 5%.
Start Start	Press this to begin scene setup.	Stand-by dimming	After hold time, the light will dim from 100 % to optional standby dimming levels. Use this button and the + - buttons to adjust.	Reserved button	Not applicable to this product.
Memory Memory	Saves the scene settings.	Hold time	The period that light will stay illuminated 100 % after no motion is detected. Use this button and the + - buttons to adjust.	Daylight harvesting	Daylight harvesting function enabled or disabled.
Apply Apply	Applies current scene settings to the fixture.	Stand-by period	The period after holdtime, during which the light keeps standby dimming level. Use this button and the + - buttons to adjust.	Test button	Press this button to test the sensor; it will temporarily change the hold time to 2s. This setting cannot be saved.



ASD-09MW
Microwave motion sensor 3pin



ASD-06RC
Remote control



ASD-09IR
Infrared motion sensor 3pin



ASD-06RC
Remote control

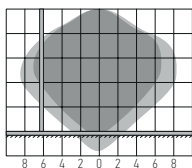


ASD-09IR50
Infrared motion sensor 3pin

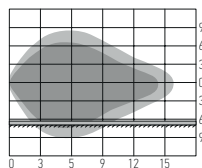


ASD-06RC
Remote control

MICROWAVE MOTION SENSOR:



Ceiling mounted

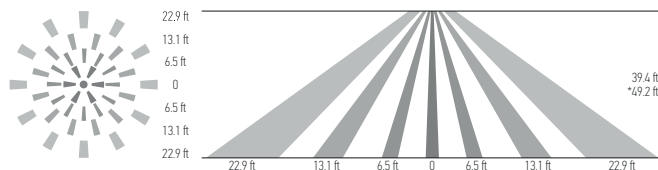


Wall mounted

Highest mounting height is 49.2 ft (15 m). This figure indicates the maximum distance at the highest mounting height with 100 % sensitivity.

■ Well detected area
□ Possibly detected area

INFRARED MOTION SENSOR:



Mounting height < 39.4 ft (12 m) ceiling mounting (* for ASD-09IR50 < 49.2 ft (15 m))

User notes:

- Microwaves can penetrate walls or glass thinner than 0.8" but will be impaired if thicker than 0.8".
- The driver voltage shall be stable and float within 10 %.
- Detection area will be affected by speed of motion, mounting height and movement volume.
- Conduct testing with adequate ambient lighting for best results.
- Dimming performance differs when connected to different drivers; if the driver can't completely turn OFF, sensor can't either.
- The first time powered ON sensor, light will be ON 100% for about 10S then dims to standby level or OFF.

Installation precautions:

- Suitable for ceiling mount installation, adjust sensitivity properly if it's installed on side-wall because it gets more sensitive.
- Make sure the microwave module is completely exposed.
- The detection surface of the sensor module should be installed facing the detection area.

Application environment:

- Suitable for indoor application, half/completely outdoor environment conditions might trigger the sensor.
- Shall be mounted securely, to avoid any false triggers caused by movement of the fixture itself.
- Keep the sensor module away from AC input and DC output to avoid high/low frequency signal interference.

User notes:

- The driver voltage shall be stable and float within 10%.
- Detection area options may not function as expected because they depend on the Fresnel lens, which physically determines their operation.
- Detection distance performance works better when moving parallel to the sensor as opposed to towards it.
- Conduct testing with adequate ambient lighting for best results.
- Dimming performance differs when connected to different drivers; if the driver can't completely turn OFF, sensor can't either.
- The first time powering ON the sensor, light will be ON 100% for about 45S then dims to standby level or OFF.

Installation precautions:

- PIR sensor can't be placed inside any material, fresnel lens must be completely exposed in air.
- Fresnel lens of the PIR sensor must be lower than light fixture.
- Suitable for ceiling mount installation, adjust sensitivity properly if it's installed on a wall because it will become more sensitive.

Application environment:

- Suitable for indoor application, partial/completely outdoor environment conditions might trigger the sensor.
- The PIR sensor is not suitable for environments with sudden changes in temperature or airflow.
- Not suitable environment if there's shelves between the sensor and target area.
- Shall be mounted securely, to avoid any false triggers caused by movement of the fixture itself.

Specifications	models: ASD-09MW	models: ASD-09IR	models: ASD-09IR50	Default setting
Detection area	25 %/50 %/75 %/100 %			100 %
Hold time	Remote control: 5 s/30 s/1 min/3 min/5 min/10 min/20 min/30 min	Built-in switch: 5 s/1 min/5 min/10 min		10 min
Daylight threshold	2 lux (0.2 fc)/10 lux (0.9 fc)/30 lux (2.8 fc)/50 lux (4.7 fc)/80 lux (7.4 fc)/120 lux (11.2 fc)/200 lux (18.6 fc)/250 lux (23.2 fc)/300 lux (27.9 fc)/350 lux (32.5 fc)/400 lux (37.2 fc)/disable			
Standby period	0 s/10 s/30 s/1 min/5 min/10 min/30 min/60 min/+∞			
Standby dimming level	Remote control: 10 %/20 %/30 %/50 %	Built-in switch: 0 %/10 %/30 %/50 %		10 %
Operating voltage	10 - 15 V			
Operating current	< 30 mA	< 15 mA	< 30 mA	-
Mounting height	max 49.2 ft (15 m)	max 39.4 ft (12 m)	max 49.2 ft (15 m)	-
Detection range	≥ 9 ft (3 m)	9.8 - 22.9 ft (3-7 m)		-
Operating frequency	5.8 GHz ± 75 MHz	-	-	-
Transmitting power	< 0.3 mW	-	-	-

For most up-to-date spec sheets please refer to asd-lighting.com

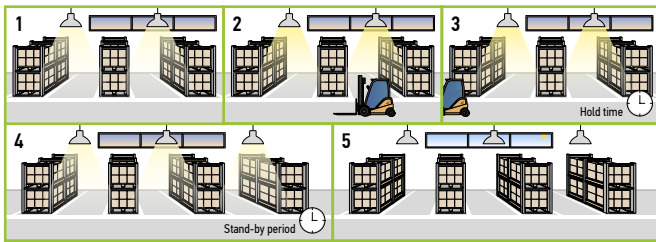


LED AREA LIGHT WITH Q-BASE AND PHOTOCELL

PRO series

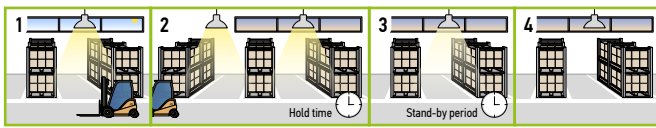
WITH DUSK/DAWN FUNCTION:

1. With insufficient ambient brightness, sensor turns on light and keeps it at standby dimming level even if there is no motion or presence.
2. When sensor detects motion or presence it will bring the light level up to 100%.
3. After motion is no longer detected, fixture remains at 100% for hold time.
4. After the preset hold time period, it will dim to the standby dimming level and maintain it indefinitely.
5. With sufficient ambient brightness, sensor will turn OFF light automatically.



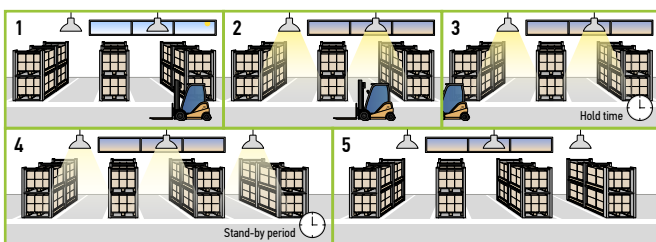
WITH DAYLIGHT DISABLED:

1. Sensor turns ON light when motion is detected.
2. Light will stay on after detecting motion for the desired hold time.
3. Sensor dims light to standby dimming level after hold time if there is still no motion.
4. Sensor turns OFF light after standby period.



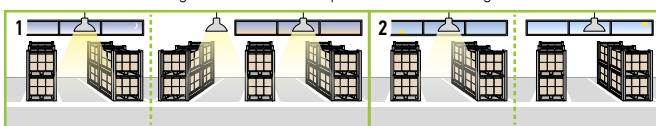
WITH DAYLIGHT THRESHOLD:

1. With sufficient daylight, the light remains OFF even after motion is detected.
2. With insufficient daylight, the sensor turns light ON when motion is detected.
3. After there's no motion detected, the sensor keeps light ON 100% for holdtime.
4. After holdtime, sensor dims light to standby dimming level for standby period. If the standby period has been set as 0s, sensor turns light OFF automatically after holdtime.
5. The sensor turns OFF light automatically after the standby period when there's no motion detected.



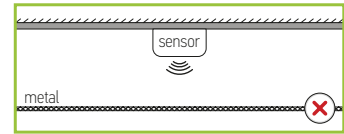
DAYLIGHT HARVESTING:

1. When the ambient brightness is lower than the preset lux level, the sensor will automatically turn on the light and adjust the dimming according to changes in ambient brightness. As it gets darker outside, the fixtures will brighten, and as it gets brighter outside, the fixtures will dim.
2. When the ambient brightness exceeds the preset lux level, the light will turn OFF.

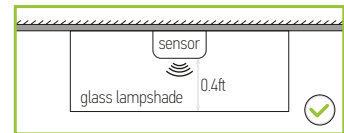


MICROWAVE MOTION SENSOR:

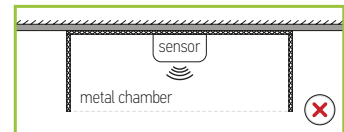
To avoid blocking the microwave emission, the microwave sensor can not be covered with metal materials, be sprayed with a coating of metal components, or have attached metal material or stickers etc.



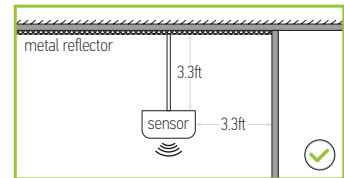
The distance between the antenna and the glass (dielectric material) should be no less than 0.4 ft when the sensor is within the glass lampshade. Otherwise, the microwave motion sensor will not penetrate the glass easily.



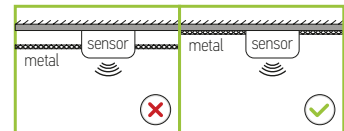
Avoid placing the sensor inside a metal chamber, this may cause a mis-trigger.



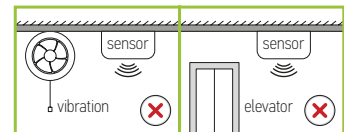
The sensor should not be placed in a small confined space. To avoid increasing the sensor detection range or abnormal operation, the sensor should be kept away from large areas of metal and glass reflectors (separation distance at least 3.3 ft). Reduce the detection area setting.



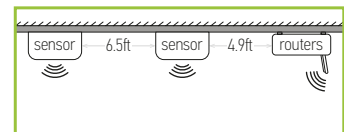
To avoid affecting the microwave signal transmission, the microwave antenna should be higher than the surrounding metal surface.



Any vibration or movement may trigger the sensor. Ensure the sensor is far from any constant movement.

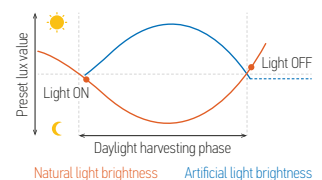


At least 2 m/6.5 ft distance between microwave sensors; 1.5 m/4.9 ft between the sensor and other wireless devices such as routers to avoid possible radio interference.



DAYLIGHT HARVESTING SETTING:

1. Adjust "daylight" value higher than 50lux.
2. Preset "standby period" 0s.
3. Press "daylight harvesting" button on remote control to activate.



For most up-to-date spec sheets please refer to asd-lighting.com



LED AREA LIGHT WITH Q-BASE AND PHOTOCELL

PRO series

INSTALLATION GUIDE

IMPORTANT SAFETY INFORMATION:

Please read all the instructions below before installation!

- ▶ Make sure that the supply voltage corresponds to the rated product voltage.
- ▶ The product must be installed by a qualified electrician in accordance with the National Electrical Code and corresponding local codes.
- ▶ If the product is damaged, do not use it.

⚠ WARNING

Risk of personal injury – read and follow all warnings and installation instructions. Keep or give to the owner for future reference.

Risk of cuts: Wear gloves to prevent cuts or abrasions when removing from carton, handling, installing, and maintaining this product.

Risk of electric shock: This product must be installed in accordance with the applicable installation code by a person familiar with the construction and operation of the product and the hazards involved.

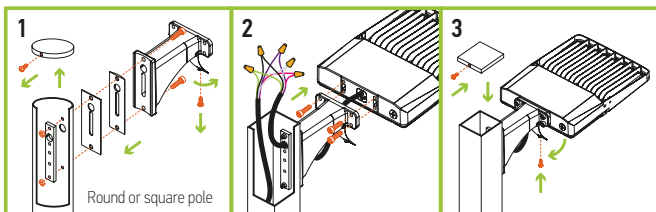
Risk of Fire: Minimum 194°F supply conductors. Consult a qualified electrician to ensure correct branch circuit conductor.

ASD® assumes no responsibility for claims arising out of improper or careless Installation or handling of this product.

ARM MOUNTING BRACKET:

ASD-AM-LSB5 sold separately

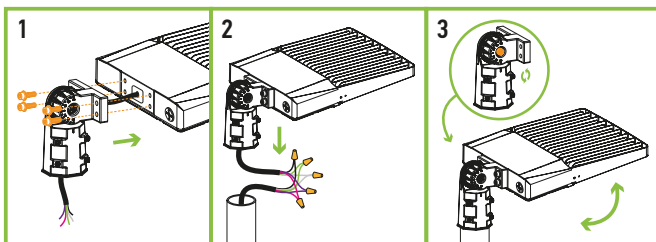
1. Open up the door on the arm bracket (1 screw). Install the mounting arm onto the pole (2 bolts). Make sure the silicone gaskets form a tight seal.
2. Thread the cord from the fixture through the bracket into the pole and tighten the four M8 screws on the body of the light. Wire in accordance with wiring schematic.
3. Close the door on the arm bracket (1 screw).



SLIP FITTER MOUNTING BRACKET:

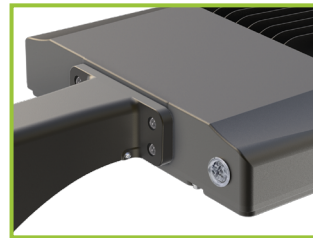
ASD-SF-LSB5 **ASD-SF2-LSB** sold separately

1. Thread the wire through the slip fitter and secure it to the fixture with four screws.
2. Make AC connections in accordance with wiring diagram.
3. If necessary adjust the fixture angle with the large hex bolt on the side of the slip fitter.



* The wiring is inside the pole, the side is sealed with a rubber ring and secured with screws, preventing water from getting inside the fixture.

BUILT-IN PHOTOCELL INFORMATION



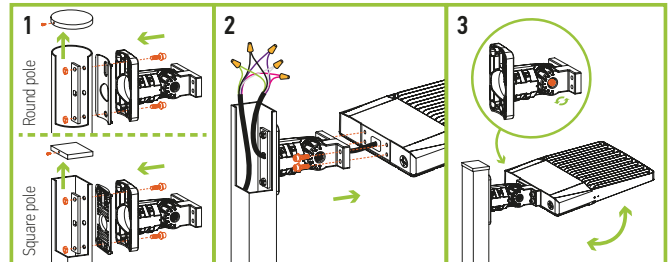
Specifications	
Light level to turn ON	≤ 80 lux (≤ 7.4 fc)
Light level to turn OFF	≥ 150 lux (≥ 13.9 fc)
Operating temperature	-40°F to 140°F (-40°C to 60°C)

The fixtures with a built-in photocell automatically turn off during daylight hours. Photocell can be easily deactivated by unscrewing it.

ADJUSTABLE ARM MOUNTING BRACKET:

ASD-AMR-LSB5 **ASD-AMR2-LSB** sold separately

1. Open up the door on the arm bracket (1 screw). Install the mounting arm onto the pole (2 bolts). Make sure the silicone gaskets form a tight seal. Choose gasket depending on the shape of the pole (round or flat).
2. Thread the cord from the fixture through the bracket into the pole and tighten the four M8 screws on the body of the light. Wire in accordance with wiring schematic.
3. Adjust the fixture angle with the large hex bolt on the side of the bracket. If necessary.

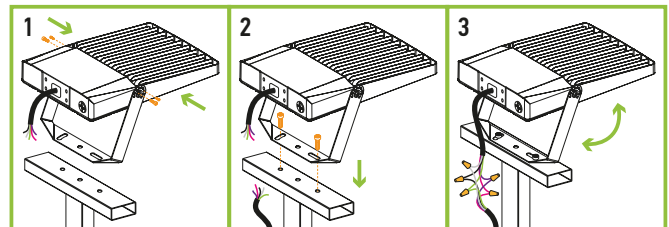


FLOODLIGHT MOUNTING BRACKET:

ASD-FM1-LSB5B **ASD-FM2-LSB5B** **ASD-FM3-LSB5B**

sold separately

1. Drill holes on the mounting surface corresponding to the holes in the arm. Attach fixture to bracket with 2 screws.
2. Align bracket holes with mounting surface holes and secure with 2 screws.
3. Wire in accordance with the wiring schematic. Seal the connections with the back plate of the fixture. Adjust fixture angle as needed.



For most up-to-date spec sheets please refer to asd-lighting.com

ASD LIGHTING CORP

E-mail: orders@asd-lighting.com | Web site: www.asd-lighting.com





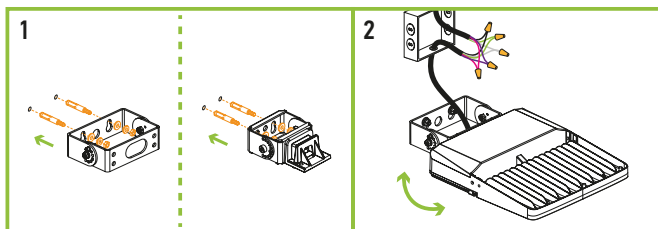
LED AREA LIGHT WITH Q-BASE AND PHOTOCELL

PRO series

FULL TRUNNION MOUNTING BRACKET:

ASD-TR-LSB5 **ASD-TR2-LSB** sold separately

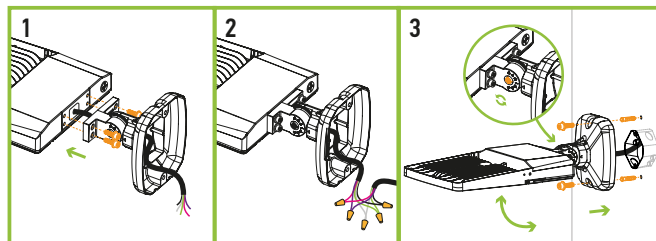
1. Drill holes on the mounting surface matching in size to the holes on the arm. Secure the bracket on the wall with screws. Pull wires through mount, secure fixture to the bracket.
2. Wire the AC power into the water tight junction box as shown in the wiring schematic diagram. Adjust the screw position to get desired angle when necessary.



WALL MOUNTING BRACKET:

ASD-WMB-LSB sold separately

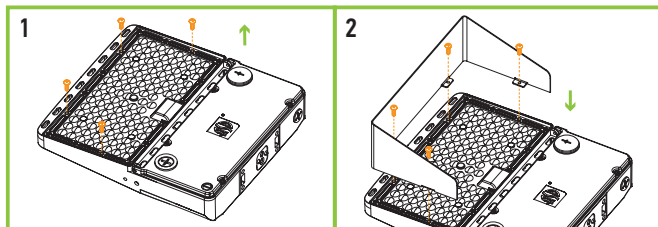
1. Take the bracket apart. Mark and drill two holes in the wall. Insert two dowels into the holes and secure the bracket to the wall using bolts. Then, feed the wire from the bracket into the lamp body. Once properly positioned, use four screws to fasten the lamp body to the gasket.
2. Wire according to the electrical schematic diagram.
3. Put the bracket on the bolt with screws. Turn the large screws to adjust the angle.



SPILL SHIELD INSTALLATION:

ASD-SPS-LSB5 **ASD-SPS2-LSB5** sold separately

1. Take out 4 screws from the front of the 150-200W fixture, 6 screws for 240-300W fixture.
2. Attach the visor to the lens and secure it with new screws. For 150-200W fixtures, use ASD-SPS-LSB5 and 4 bolts; for 240-500W fixtures, use ASD-SPS2-LSB5 and 6 bolts. Ensure all screws are tightened securely.



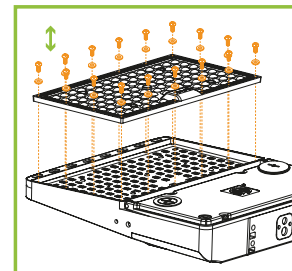
LENS INSTALLATION:

ASD-L5A-LSB5B **ASD-LFLA-LSB5B**
ASD-L4B-LSB5B **ASD-L5B-LSB5B** **ASD-LFLB-LSB5B**

sold separately

1. Unscrew all screws from the original lens (T3-M) on the housing.
2. Install the rubber ring on new lens (T4/T5-M, sold separately).
3. Place the lens on the housing and make sure it fits the LEDs correctly.
4. Tighten all the screws back.

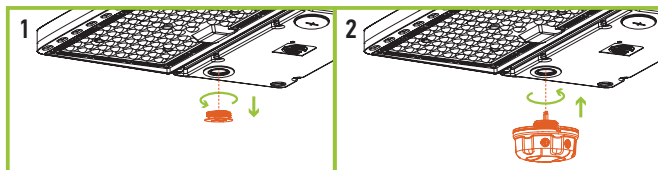
Models	Lens
150W, 200W	1 lens (L5A, LFLA)
240W, 300W	1 lens (L4B, L5B, LFLB)
500W	2 lenses (L4B, L5B, LFLB)



MOTION SENSOR INSTALLATION:

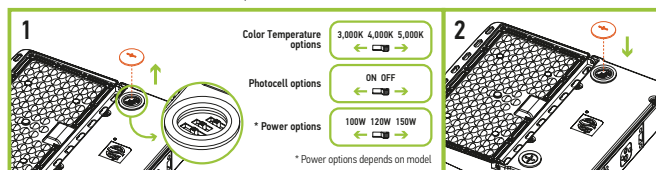
ASD-09MW **ASD-09IR** **ASD-09IR50** sold separately

1. Unscrew the sensor base cap.
2. Insert and twist the sensor until it is tight on the base surface.



POWER, COLOR TEMPERATURE AND PHOTOCELL SETTINGS:

1. Open knock-out cap in the front panel of the fixture. Select needed power, color temperature and on/off photocell mode with a simple switch.
2. Then close the knock-out cap back.



For most up-to-date spec sheets please refer to asd-lighting.com

ASD LIGHTING CORP

E-mail: orders@asd-lighting.com | Web site: www.asd-lighting.com





LED AREA LIGHT WITH Q-BASE AND PHOTOCCELL

PRO series

ORDERING INFORMATION

Model	Product dimensions	Weight	Pcs. per carton	Carton size	Carton weight	UPC
LSB5B-PRO 120-277V 170lm/W						
ASD-LSB5B-PRO-150BK	12 5/16" x 11 5/16" x 2 7/16"	5.7 lbs(2.6kg)	1	14.57" x 13.39" x 4.72"	6.8 lbs	81012811871
ASD-LSB5B-PRO-150BR	12 5/16" x 11 5/16" x 2 7/16"	5.7 lbs(2.6kg)	1	14.57" x 13.39" x 4.72"	6.8 lbs	81012811604
ASD-LSB5B-PRO-150SL	12 5/16" x 11 5/16" x 2 7/16"	5.7 lbs(2.6kg)	1	14.57" x 13.39" x 4.72"	6.8 lbs	81012811835
ASD-LSB5B-PRO-150WH	12 5/16" x 11 5/16" x 2 7/16"	5.7 lbs(2.6kg)	1	14.57" x 13.39" x 4.72"	6.8 lbs	81012811873
ASD-LSB5B-PRO-200BR	12 5/16" x 11 5/16" x 2 7/16"	5.7 lbs(2.6kg)	1	14.57" x 13.39" x 4.72"	6.8 lbs	81012811605
ASD-LSB5B-PRO-240BR	16 9/16" x 12 3/16" x 2 1/2"	7.1 lbs(3.2kg)	1	18.90" x 14.17" x 4.72"	8.2 lbs	81012811606
ASD-LSB5B-PRO-300BK	16 9/16" x 12 3/16" x 2 1/2"	7.1 lbs(3.2kg)	1	18.90" x 14.17" x 4.72"	8.2 lbs	81012811890
ASD-LSB5B-PRO-300BR	16 9/16" x 12 3/16" x 2 1/2"	7.1 lbs(3.2kg)	1	18.90" x 14.17" x 4.72"	8.2 lbs	81012811607
ASD-LSB5B-PRO-300SL	16 9/16" x 12 3/16" x 2 1/2"	7.1 lbs(3.2kg)	1	18.90" x 14.17" x 4.72"	8.2 lbs	81012811881
ASD-LSB5B-PRO-300WH	16 9/16" x 12 3/16" x 2 1/2"	7.1 lbs(3.2kg)	1	18.90" x 14.17" x 4.72"	8.2 lbs	81012811882
ASD-LSB5B-PRO-500BR	29 7/16" x 12 3/16" x 2 3/4"	14.1 lbs(6.4kg)	1	31.30" x 14.17" x 4.92"	15.7 lbs	81012811688
LSB5BHV-PRO 200-480V 170lm/W						
ASD-LSB5BHV-PRO-150BR	12 5/16" x 11 5/16" x 2 7/16"	5.7 lbs(2.6kg)	1	14.57" x 13.39" x 4.72"	6.8 lbs	81012811608
ASD-LSB5BHV-PRO-200BR	12 5/16" x 11 5/16" x 2 7/16"	5.7 lbs(2.6kg)	1	14.57" x 13.39" x 4.72"	6.8 lbs	81012811689
ASD-LSB5BHV-PRO-240BR	16 9/16" x 12 3/16" x 2 1/2"	7.1 lbs(3.2kg)	1	18.90" x 14.17" x 4.72"	8.2 lbs	81012811609
ASD-LSB5BHV-PRO-300BR	16 9/16" x 12 3/16" x 2 1/2"	7.1 lbs(3.2kg)	1	18.90" x 14.17" x 4.72"	8.2 lbs	81012811610
ASD-LSB5BHV-PRO-300SL	16 9/16" x 12 3/16" x 2 1/2"	7.1 lbs(3.2kg)	1	18.90" x 14.17" x 4.72"	8.2 lbs	81012811612
ASD-LSB5BHV-PRO-500BR	29 7/16" x 12 3/16" x 2 3/4"	14.1 lbs(6.4kg)	1	31.30" x 14.17" x 4.92"	15.7 lbs	81012811690

ACCESSORIES:

Model	Product dimensions	Pcs. in middle box*	Middle box size	Middle box weight	Pcs. per carton	Carton size	Carton weight	UPC	GTIN 14 in middle box*	GTIN 14
ASD-09MW-WH	2-1/8" x 2-1/8" x 1-5/16"	10	5.5" x 2.6" x 1.14"	1.2 lbs	120	17.32" x 11.81" x 11.02"	12.1 lbs	81012811370	20810128113704	30810128113701
ASD-09MW-BK	2-1/8" x 2-1/8" x 1-5/16"	10	5.5" x 2.6" x 1.14"	1.2 lbs	120	17.32" x 11.81" x 11.02"	12.1 lbs	81012811371	20810128113711	30810128113718
ASD-09IR-WH	2-1/8" x 2-1/8" x 1-11/16"	10	5.5" x 2.6" x 1.14"	1.2 lbs	120	17.32" x 11.81" x 11.02"	12.1 lbs	81012811369	20810128113698	30810128113695
ASD-09IR-BK	2-1/8" x 2-1/8" x 1-11/16"	10	5.5" x 2.6" x 1.14"	1.2 lbs	120	17.32" x 11.81" x 11.02"	12.1 lbs	81012811434	20810128114343	30810128114340
ASD-09IR50-WH	2-1/8" x 2-1/8" x 1-11/16"	10	5.5" x 2.6" x 1.14"	1.2 lbs	120	17.32" x 11.81" x 11.02"	10.7 lbs	81012811679	10810128116791	20810128116798
ASD-06RC	5-11/16" x 1-3/4" x 13/16"	10	6.3" x 2.9" x 1.14"	0.5 lbs	60	15.75" x 11.81" x 9.29"	24.7 lbs	81012811437	30810128114371	40810128114378
ASD-AM-LSB5-WH	6-13/16" x 6-1/4" x 2-5/16"	-	-	-	10	26.97" x 9.45" x 15.94"	15.4 lbs	81012811847	-	10810128118474
ASD-AM-LSB5-SL	6-13/16" x 6-1/4" x 2-5/16"	-	-	-	10	26.97" x 9.45" x 15.94"	15.4 lbs	81012811846	-	10810128118467
ASD-AM-LSB5-BR	6-13/16" x 6-1/4" x 2-5/16"	-	-	-	10	26.97" x 9.45" x 15.94"	15.4 lbs	81012811620	-	10810128116203
ASD-AM-LSB5-BK	6-13/16" x 6-1/4" x 2-5/16"	-	-	-	10	26.97" x 9.45" x 15.94"	15.4 lbs	81012811845	-	10810128118450
ASD-AMR-LSB5-WH	7-1/4" x 4-15/16" x 6-1/4"	-	-	-	20	27.36" x 16.54" x 13.98"	52.9 lbs	81012811329	-	10810128113295
ASD-AMR-LSB5-SL	7-1/4" x 4-15/16" x 6-1/4"	-	-	-	20	27.36" x 16.54" x 13.98"	52.9 lbs	81012811225	-	20810128112257
ASD-AMR-LSB5-BR	7-1/4" x 4-15/16" x 6-1/4"	-	-	-	20	27.36" x 16.54" x 13.98"	52.9 lbs	81012811224	-	20810128112240
ASD-AMR-LSB5-BK	7-1/4" x 4-15/16" x 6-1/4"	-	-	-	20	27.36" x 16.54" x 13.98"	52.9 lbs	81012811223	-	20810128112233
ASD-AMR2-LSB-WH	9-5/8" x 6-1/4" x 4-5/16"	-	-	-	10	21.38" x 9.57" x 13.43"	30.9 lbs	81012811401	-	10810128114018
ASD-AMR2-LSB-SL	9-5/8" x 6-1/4" x 4-5/16"	-	-	-	10	21.38" x 9.57" x 13.43"	30.9 lbs	81012811333	-	10810128113332
ASD-AMR2-LSB-BR	9-5/8" x 6-1/4" x 4-5/16"	-	-	-	10	21.38" x 9.57" x 13.43"	30.9 lbs	81012811332	-	10810128113325
ASD-AMR2-LSB-BK	9-5/8" x 6-1/4" x 4-5/16"	-	-	-	10	21.38" x 9.57" x 13.43"	30.9 lbs	81012811331	-	10810128113318
ASD-SF-LSB5-WH	7-1/16" x 4-15/16" x 3-1/16"	-	-	-	20	15.51" x 17.72" x 11.14"	35.3 lbs	81012811330	-	10810128113301
ASD-SF-LSB5-SL	7-1/16" x 4-15/16" x 3-1/16"	-	-	-	20	15.51" x 17.72" x 11.14"	35.3 lbs	81012811197	-	10810128111970
ASD-SF-LSB5-BR	7-1/16" x 4-15/16" x 3-1/16"	-	-	-	20	15.51" x 17.72" x 11.14"	35.3 lbs	81012811104	-	20810128111045
ASD-SF-LSB5-BK	7-1/16" x 4-15/16" x 3-1/16"	-	-	-	20	15.51" x 17.72" x 11.14"	35.3 lbs	81012811196	-	10810128111963
ASD-SF2-LSB-WH	10-11/16" x 4-5/16" x 3-3/8"	-	-	-	10	18.43" x 9.25" x 11.77"	35.1 lbs	81012811425	-	10810128114254
ASD-SF2-LSB-SL	10-11/16" x 4-5/16" x 3-3/8"	-	-	-	10	18.43" x 9.25" x 11.77"	35.1 lbs	81012811424	-	10810128114247
ASD-SF2-LSB-BR	10-11/16" x 4-5/16" x 3-3/8"	-	-	-	10	18.43" x 9.25" x 11.77"	35.1 lbs	81012811423	-	10810128114230
ASD-SF2-LSB-BK	10-11/16" x 4-5/16" x 3-3/8"	-	-	-	10	18.43" x 9.25" x 11.77"	35.1 lbs	81012811422	-	10810128114223
ASD-TN-BR	9-7/16" x 3-15/16" x 8-11/16"	-	-	-	5	21.73" x 10.43" x 9.80"	26.2 lbs	81012811680	-	10810128116807
ASD-B2BT	26" x 14-3/16" x 2-3/4"	-	-	-	2	28.43" x 9.92" x 18.50"	28.0 lbs	81012811787	-	10810128117873
ASD-B3BT	37-13/16" x 14-3/16" x 2-3/4"	-	-	-	1	39.45" x 4.41" x 17.32"	19.0 lbs	81012811788	-	-
ASD-TR-LSB5-WH	6-9/16" x 4-7/16" x 1-7/8"	-	-	-	20	14.76" x 10.31" x 12.40"	44.1 lbs	81012811343	-	10810128113431
ASD-TR-LSB5-SL	6-9/16" x 4-7/16" x 1-7/8"	-	-	-	20	14.76" x 10.31" x 12.40"	44.1 lbs	81012811199	-	10810128111994
ASD-TR-LSB5-BR	6-9/16" x 4-7/16" x 1-7/8"	-	-	-	20	14.76" x 10.31" x 12.40"	44.1 lbs	81012811105	-	10810128111055
ASD-TR-LSB5-BK	6-9/16" x 4-7/16" x 1-7/8"	-	-	-	20	14.76" x 10.31" x 12.40"	44.1 lbs	81012811198	-	10810128111987
ASD-TR2-LSB-WH	7-1/16" x 5-7/8" x 2-11/16"	-	-	-	10	14.5" x 14" x 8.2"	31.7 lbs	810128114295	-	10810128114292
ASD-TR2-LSB-SL	7-1/16" x 5-7/8" x 2-11/16"	-	-	-	10	14.5" x 14" x 8.2"	31.7 lbs	810128114288	-	10810128114285
ASD-TR2-LSB-BR	7-1/16" x 5-7/8" x 2-11/16"	-	-	-	10	14.5" x 14" x 8.2"	31.7 lbs	810128114271	-	10810128114278
ASD-TR2-LSB-BK	7-1/16" x 5-7/8" x 2-11/16"	-	-	-	10	14.5" x 14" x 8.2"	31.7 lbs	810128114264	-	10810128114261
ASD-FM1-LSB5B-WH	11-7/16" x 6-5/16" x 9-7/8"	-	-	-	10	24.80" x 13.78" x 12.40"	21.2 lbs	81012811839	-	10810128118399
ASD-FM1-LSB5B-SL	11-7/16" x 6-5/16" x 9-7/8"	-	-	-	10	24.80" x 13.78" x 12.40"	21.2 lbs	81012811672	-	10810128116722
ASD-FM1-LSB5B-BR	11-7/16" x 6-5/16" x 9-7/8"	-	-	-	10	24.80" x 13.78" x 12.40"	21.2 lbs	81012811838	-	10810128118382
ASD-FM1-LSB5B-BK	11-7/16" x 6-5/16" x 9-7/8"	-	-	-	10	24.80" x 13.78" x 12.40"	21.2 lbs	81012811671	-	10810128116715

For most up-to-date spec sheets please refer to asd-lighting.com

ASD LIGHTING CORP

E-mail: orders@asd-lighting.com | Web site: www.asd-lighting.com





LED AREA LIGHT WITH Q-BASE AND PHOTOCCELL

PRO series

Model	Product dimensions	Pcs. in middle box*	Middle box size	Middle box weight	Pcs. per carton	Carton size	Carton weight	UPC	GTIN 14 in middle box*	GTIN 14
ASD-FM2-LSB5B-WH	12-9/16" x 6-1/16" x 9-5/16"	-	-	-	10	22.64" x 13.98" x 13.98"	27.6 lbs	81012811841	-	10810128118412
ASD-FM2-LSB5B-SL	12-9/16" x 6-1/16" x 9-5/16"	-	-	-	10	22.64" x 13.98" x 13.98"	27.6 lbs	81012811674	-	10810128116746
ASD-FM2-LSB5B-BR	12-9/16" x 6-1/16" x 9-5/16"	-	-	-	10	22.64" x 13.98" x 13.98"	27.6 lbs	81012811673	-	10810128116739
ASD-FM2-LSB5B-BK	12-9/16" x 6-1/16" x 9-5/16"	-	-	-	10	22.64" x 13.98" x 13.98"	27.6 lbs	81012811840	-	10810128118405
ASD-FM3-LSB5B-WH	12-11/16" x 7-1/2" x 12-3/8"	-	-	-	5	14.96" x 13.78" x 13.78"	22.1 lbs	81012811844	-	10810128118443
ASD-FM3-LSB5B-SL	12-11/16" x 7-1/2" x 12-3/8"	-	-	-	5	14.96" x 13.78" x 13.78"	22.1 lbs	81012811842	-	10810128118429
ASD-FM3-LSB5B-BR	12-11/16" x 7-1/2" x 12-3/8"	-	-	-	5	14.96" x 13.78" x 13.78"	22.1 lbs	81012811675	-	10810128116753
ASD-FM3-LSB5B-BK	12-11/16" x 7-1/2" x 12-3/8"	-	-	-	5	14.96" x 13.78" x 13.78"	22.1 lbs	81012811843	-	10810128118436
ASD-WMB-LSB-BR	7-3/16" x 6-1/4" x 3-5/16"	-	-	-	8	18.50" x 15.75" x 13.98"	9.3 lbs	81012811848	-	10810128118481
ASD-SPS-LSB5-BR	11" x 5-7/8" x 2-3/4"	-	-	-	10	15.35" x 12.95" x 12.40"	13.2 lbs	81012811784	-	10810128117842
ASD-SPS2-LSB5-BR	11-15/16" x 8-1/2" x 2-3/4"	-	-	-	10	18.50" x 15.55" x 12.99"	17.6 lbs	81012811785	-	10810128117859
ASD-LSA-LSB5B	10-9/16" x 5-7/8" x 1/2"	-	-	-	30	10.83" x 8.46" x 12.01"	11.7 lbs	81012811617	-	10810128116173
ASD-LFLA-LSB5B	10-9/16" x 5-7/8" x 1/2"	-	-	-	30	10.83" x 8.46" x 12.01"	11.7 lbs	81012811619	-	10810128116197
ASD-L4B-LSB5B	11-7/8" x 8-1/4" x 7/16"	-	-	-	30	11.81" x 10.83" x 12.80"	12.4 lbs	81012811616	-	10810128116166
ASD-L5B-LSB5B	11-7/8" x 8-1/4" x 7/16"	-	-	-	30	11.81" x 10.83" x 12.80"	12.4 lbs	81012811618	-	10810128116180
ASD-LFLB-LSB5B	11-7/8" x 8-1/4" x 7/16"	-	-	-	30	11.81" x 10.83" x 12.64"	12.4 lbs	81012811687	-	10810128116876

ANNEX 1

Model	Watts	3,000 K	4,000 K	5,000 K
ASD-LSB5B-PRO-150WH	100W	17,215 lm	18,124 lm	17,388 lm
ASD-LSB5B-PRO-150SL	120W	19,958 lm	20,827 lm	20,520 lm
ASD-LSB5B-PRO-150BR	150W	24,335 lm	25,480 lm	24,141 lm
ASD-LSB5B-PRO-150BK	150W	24,335 lm	25,480 lm	24,141 lm
ASD-LSB5B-PRO-200BR	100W	17,707 lm	18,646 lm	18,135 lm
	150W	24,750 lm	25,904 lm	25,516 lm
	200W	32,410 lm	33,541 lm	33,273 lm
ASD-LSB5B-PRO-240BR	150W	25,935 lm	26,972 lm	26,433 lm
ASD-LSB5BHV-PRO-240BR	200W	32,734 lm	34,305 lm	33,619 lm
	240W	38,197 lm	40,208 lm	39,419 lm
ASD-LSB5B-PRO-300WH	200W	35,785 lm	37,163 lm	37,051 lm
ASD-LSB5B-PRO-300SL	240W	41,015 lm	43,620 lm	42,765 lm
ASD-LSB5B-PRO-300BR	300W	48,844 lm	52,312 lm	51,005 lm
ASD-LSB5B-PRO-300BK	300W	48,844 lm	52,312 lm	51,005 lm
ASD-LSB5B-PRO-500BR	400W	65,693 lm	69,886 lm	69,521 lm
	500W	80,148 lm	84,993 lm	83,326 lm
ASD-LSB5BHV-PRO-150BR	100W	18,124 lm	19,082 lm	18,616 lm
	120W	20,140 lm	20,758 lm	20,446 lm
	150W	23,898 lm	25,063 lm	24,436 lm
ASD-LSB5BHV-PRO-200BR	100W	17,463 lm	18,245 lm	18,135 lm
	150W	25,137 lm	65,181 lm	25,950 lm
	200W	32,410 lm	35,081 lm	34,052 lm
ASD-LSB5BHV-PRO-240BR	150W	25,427 lm	26,487 lm	26,225 lm
	200W	32,474 lm	34,632 lm	34,806 lm
	240W	38,976 lm	41,003 lm	40,224 lm
ASD-LSB5BHV-PRO-300SL	200W	33,475 lm	35,274 lm	35,098 lm
ASD-LSB5BHV-PRO-300BR	240W	39,568 lm	41,546 lm	40,923 lm
	300W	48,505 lm	52,156 lm	51,208 lm
ASD-LSB5BHV-PRO-500BR	300W	53,588 lm	56,707 lm	55,323 lm
	400W	65,770 lm	71,671 lm	70,404 lm
	500W	80,753 lm	86,367 lm	83,851 lm

Model	BUG rating
ASD-LSB5B-PRO-150WH	B4-U0-G4
ASD-LSB5B-PRO-150SL	
ASD-LSB5B-PRO-150BR	
ASD-LSB5B-PRO-150BK	
ASD-LSB5B-PRO-200BR	
ASD-LSB5B-PRO-240BR	
ASD-LSB5BHV-PRO-150BR	
ASD-LSB5BHV-PRO-200BR	
ASD-LSB5BHV-PRO-240BR	
ASD-LSB5B-PRO-300WH	
ASD-LSB5B-PRO-300SL	
ASD-LSB5B-PRO-300BR	
ASD-LSB5B-PRO-300BK	
ASD-LSB5B-PRO-500BR	
ASD-LSB5BHV-PRO-300SL	
ASD-LSB5BHV-PRO-300BR	
ASD-LSB5BHV-PRO-500BR	

For most up-to-date spec sheets please refer to asd-lighting.com