



CLIENT CASE STUDIES

Eco**Lite**TM
Leader in LED Lighting

CONTENTS

- 01 AUTO DEALERSHIP LIGHTING
- 02 AIRPORT LIGHTING
- 03 SPORTS VENUES LIGHTING

- 04 ROADWAY LIGHTING
- 05 FACTORY LIGHTING
- 06 WAREHOUSE LIGHTING

NISSAN CAR DEALERSHIP LIGHTING PROJECT



- Installation Time: May 2018
- Location: Levis, QC Canada
- Installed Luminaire: ECO-FLB320-L, ECO-FLE600-L, ECO-FLG450-U

NISSAN CAR DEALERSHIP LIGHTING PROJECT



- Installation Time: May 2018
- Location: St-Nicolas, QC Canada
- Installed Luminaire: ECO-FLB120-L, ECO-WLA60, ECO-FLE450-L

KIA CAR DEALERSHIP LIGHTING PROJECT



- Installation Time: September 2017
- Location: Trois-Rivières, Canada
- Installed Luminaire: ECO-FLE600-L

TOYOTA CAR DEALERSHIP LIGHTING PROJECT



- Installation Time: September 2017
- Location: Australia
- Installed Luminaire: ECO-LB320; FLE450-L

VOLVO CAR DEALERSHIP LIGHTING PROJECT



- Installation Time: September 2017
- Location: Trois-Rivieres, Canada
- Installed Luminaire: ECO-FLE600-L

VOLKSWAGEN CAR DEALERSHIP LIGHTING PROJECT



- Installation Time: September 2017
- Location: Trois-Rivieres, Canada
- Installed Luminaire: ECO-FLF600-L,
ECO-FLG450-U

VOLKSWAGEN CAR DEALERSHIP LIGHTING PROJECT



- Installation Time: September 2017
- Location: Trois-Rivieres, Canada
- Installed Luminaire: ECO-FLF600-L,
ECO-FLG450-U

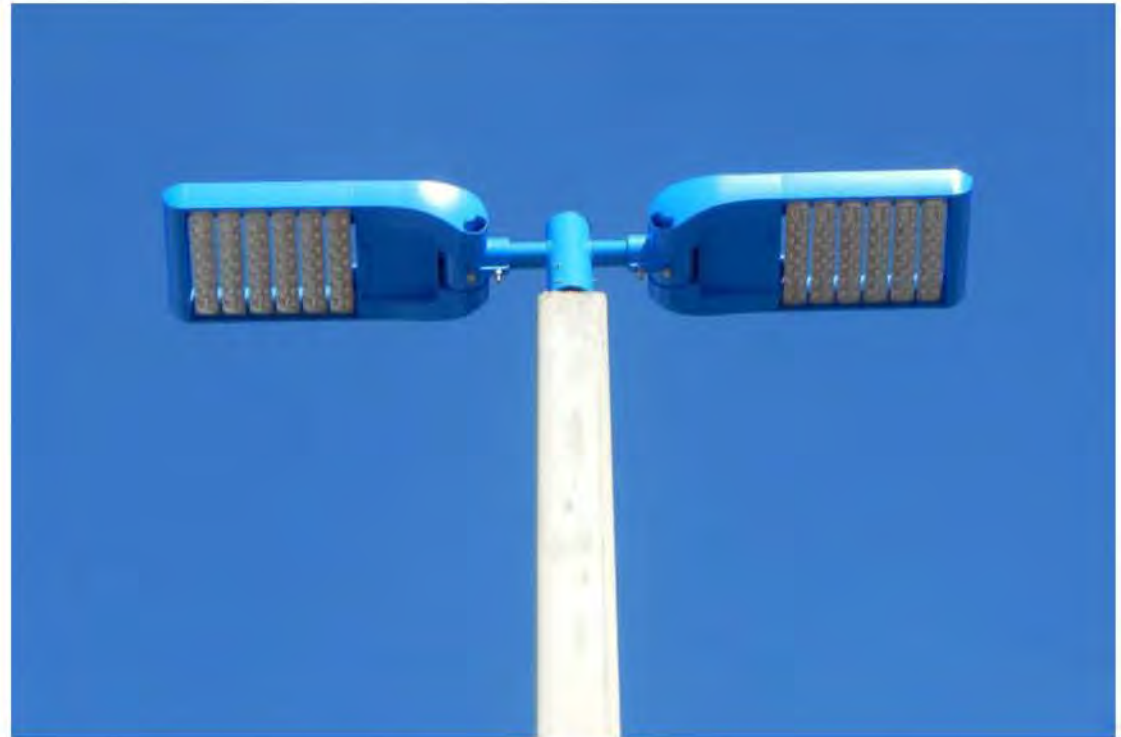
PORSCHE CAR DEALERSHIP LIGHTING PROJECT



- Installation Time: November 2017
- Location: Montreal, Canada
- Installed Luminaire: ECO-FLC160-L



HONDA CAR DEALERSHIP LIGHTING PROJECT



- Installation Time: October 2015
- Location: Florida, USA
- Installed Luminaire: ECO-ALFA Series SLB320

VOLKSWAGEN CAR DEALERSHIP LIGHTING PROJECT



- Installation Time: September 2017
- Location: Trois-Rivieres, Canada
- Installed Luminaire: ECO-FLF600-L,
ECO-FLG450-U

CADILLAC CAR DEALERSHIP LIGHTING PROJECT



- Installation Time: October 2015
- Location: USA
- Installed Luminaire: ECO-SLB160

TOYOTA CAR DEALERSHIP LIGHTING PROJECT



- Installation Time: September 2017
- Location: Australia
- Installed Luminaire: ECO-LB320; FLE450-L

ISTANBUL NEW AIRPORT LIGHTING



ISTANBUL NEW AIRPORT APRON LIGHTING PROJECT



Istanbul New Airport (INA) – planned as the world’s largest airport – is more than half way through construction and scheduled to open on 29 October 2018. When Istanbul New Airport (INA) opens 29 October 2018, it will be able to make two important boasts. Not only will it be the world’s largest airport built from scratch, but with more than 40,000 LEDs powering the airfield. Once complete, the **istanbul New Airport** will offer flights to more than 350 destinations with annual passenger capacity of up to 200 million.

ISTANBUL NEW AIRPORT APRON LIGHTING PROJECT



ISTANBUL NEW AIRPORT APRON LIGHTING PROJECT



ISTANBUL NEW AIRPORT APRON LIGHTING PROJECT





APRON LIGHTING



HANGAR LIGHTING

EcoLite™
Leader in LED Lighting



MELBOURNE AIRPORT LIGHTING

Apron and Taxiway Lighting

450W Aurora floodlights with T4S lens replaced 1000W MH Floods on the sides of two of the large hangars. The light distribution was even and extended out across the 80-100m width of the apron.



Feedback from project owner: “The traditional 1000W lights even did not reach half-way line down the taxi-way, but these 450W high output LED area lights reach all the way over to where the planes parked, which is 80m away to the lights. The airport authority and the pilots speak highly of these lights.”



Hangar Lighting

750W Aurora floodlights replaced 1000W MH high bays and 2000W Floods, T5S lenses (60 degree) were used. The fixtures produced more than 400 lux across an area of 86000 ft² at a mounting height of 72ft.



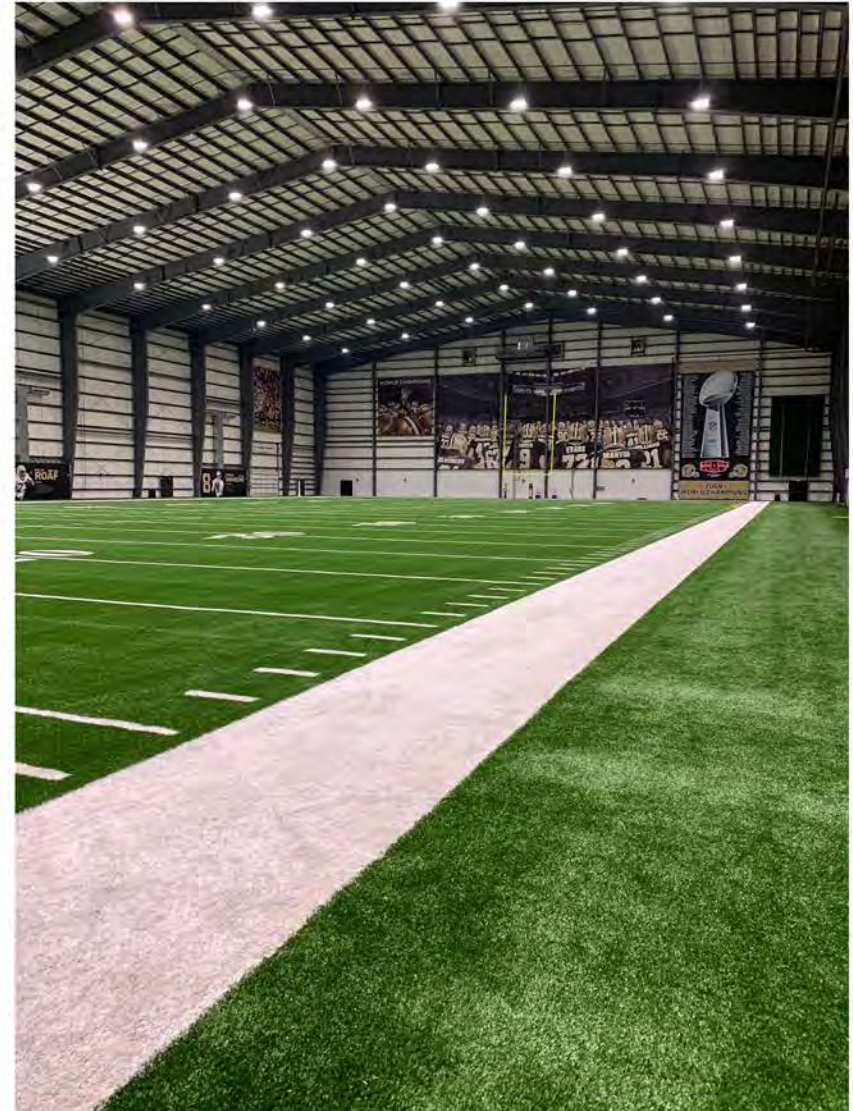
SALZBURG AIRPORT APRON LIGHTING



- Installation Time: September 2017 Location:
- Salzburg, Austria
- Installed Luminaire: ECO-FLE900-L-T4S-5000K

NEW ORLEANS SAINTS INDOOR PRACTICE FACILITY

EcoLiteTM
Leader in LED Lighting



- Installation Time: August 2019.
- Location: Metairie, Louisiana
- Installation: ECO-LSNS-SL-500W NORTH STAR SPORTS LIGHT

COALVILLE TOWN FOOTBALL CLUB LIGHTING PROJECT



EcoLiteTM
Leader in LED Lighting

COALVILLE TOWN FOOTBALL CLUB LIGHTING PROJECT

EcoLiteTM
Leader in LED Lighting



6 Units (ECO-FLD900-U-T4S-40K; ECO-FLD900-U-T5U-40K; ECO-FLD600-U-T4S-40K) Floodlights per mast, which 5 units are tilted at 10 degrees and 1 unit at 70 degrees. Energy saving is 55% against the old metal halides used.

Mounting Height: 20m

Eav 183 lux

Uniformity 0.67

RUGBY STADIUM LIGHTING PROJECT



- Installation Time: January 2018
- Location: Faroe Island
- Installed Luminaire: ECO-FLD900-U-T5U & T5S

After fierce competition with Philips for more than half year, our products won this football club lighting project in November 2017.

FOOTBALL PITCH LIGHTING PROJECT



- Installation Time: May 2016
- Location: Alabama, USA
- Installed Luminaire: ECO-FLD900-U-T5U & T5S

The soccer field for a high school in Alabama was a brand new project and it was illuminated by Aurora Series 450W with optics of T5U (10 degree beam spread) and 450W with optics of T5W (40 degree beam spread) at a mounting height of 90 feet, achieving an average light level of 700lux.

TENNIS COURTS LIGHTING PROJECT



- Installation Time: November 2017
- Location: USA
- Installed Luminaire: ECO-FLB320-L-5000K

TENNIS COURTS LIGHTING PROJECT

Installation Time: November 2016
Location: Thurgoona Country Club, Australia
Installed Luminaire: ECO-FLD600-U



TENNIS COURTS LIGHTING PROJECT

Installation Time: February 2017
Location: Vietnam
Installed Luminaire: ECO-FLD600-
U-5000K



GREYHOUND RACING RANGE LIGHTING PROJECT

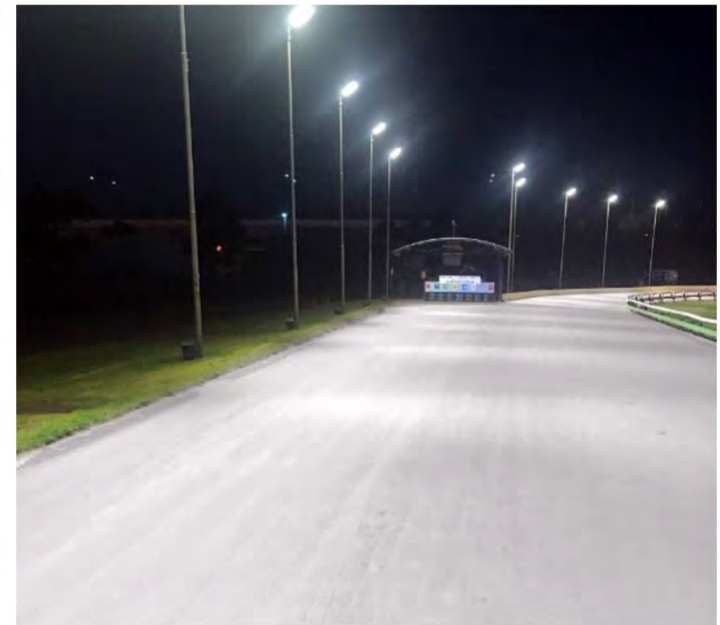
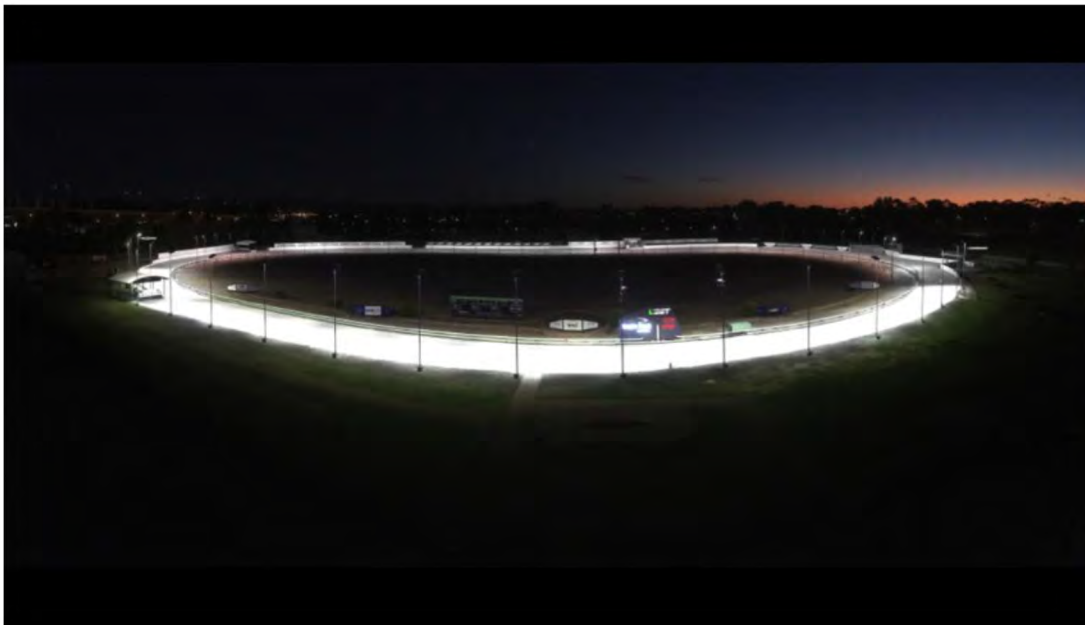


Location: Vitrolles, France



Installed Luminaire: ECO-FLB200-U-T5M

GREYHOUND RACING RANGE LIGHTING PROJECT



- Installation Time: December 2017
- Location: Australia
- Installed Luminaire: ECO-FLE600-L-5000K

POST TOP STREET LIGHTING

EcoLiteTM
Leader in LED Lighting



STREET LIGHTING PROJECT IN USA



Siegen Lane Marketplace



- Installation Time: 2020
- Location: 7677 Andrea Dr, Baton Rouge, LA 70809
- Fixtures: ECO-KOA-145W-0T, "Area Light/LED"; ECO-DEL-LSWP-41W, "Wallpack/LED"; ECO-KOA- 230W-OT, Area Light/Shoebox/LED
Lamps: ECO-CNS- CLW-27W, Corn Cob/LED

STREET LIGHTING PROJECT IN USA



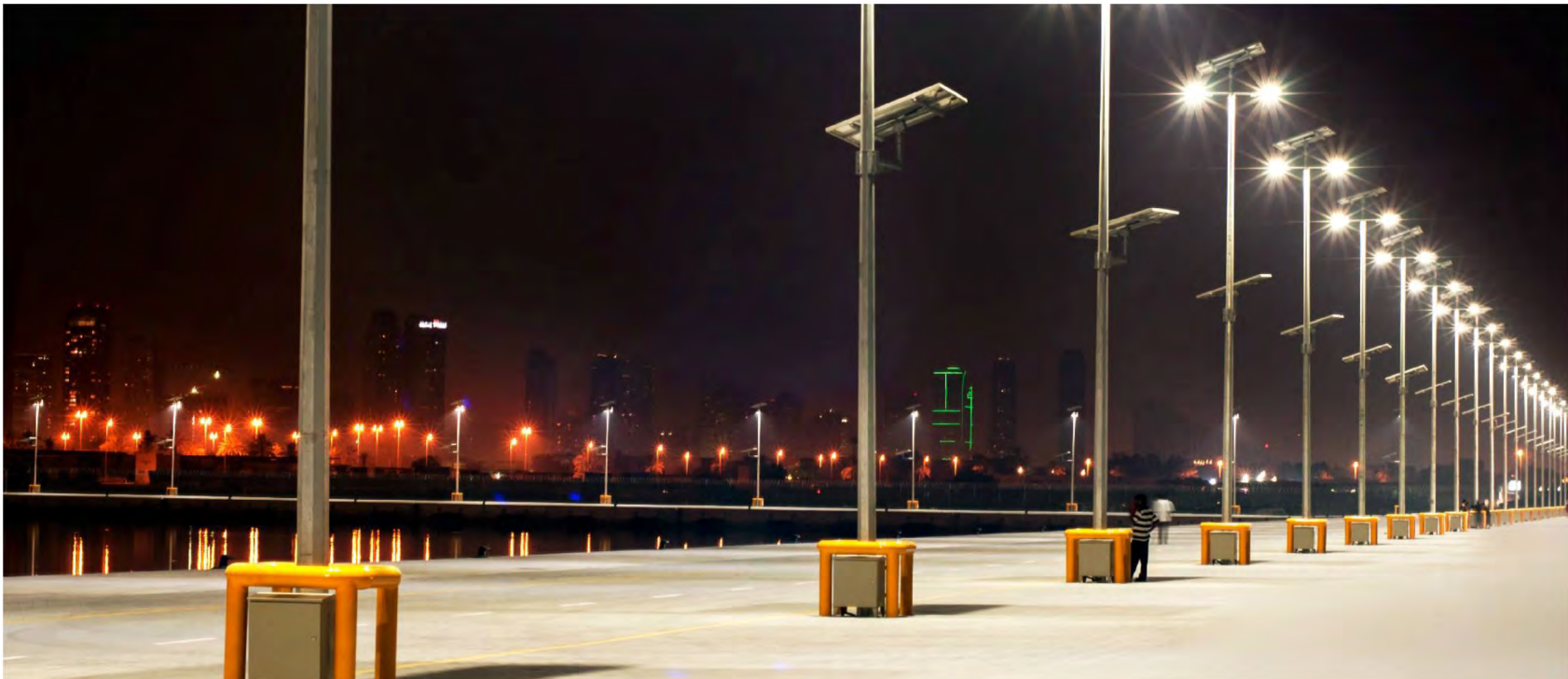
- Installation Time: August 2017
- Location: West Haven Town, CT, USA
- Installed Luminaire: ALFA Series ECO-SLA90

STREET LIGHTING PROJECT IN ESTONIA



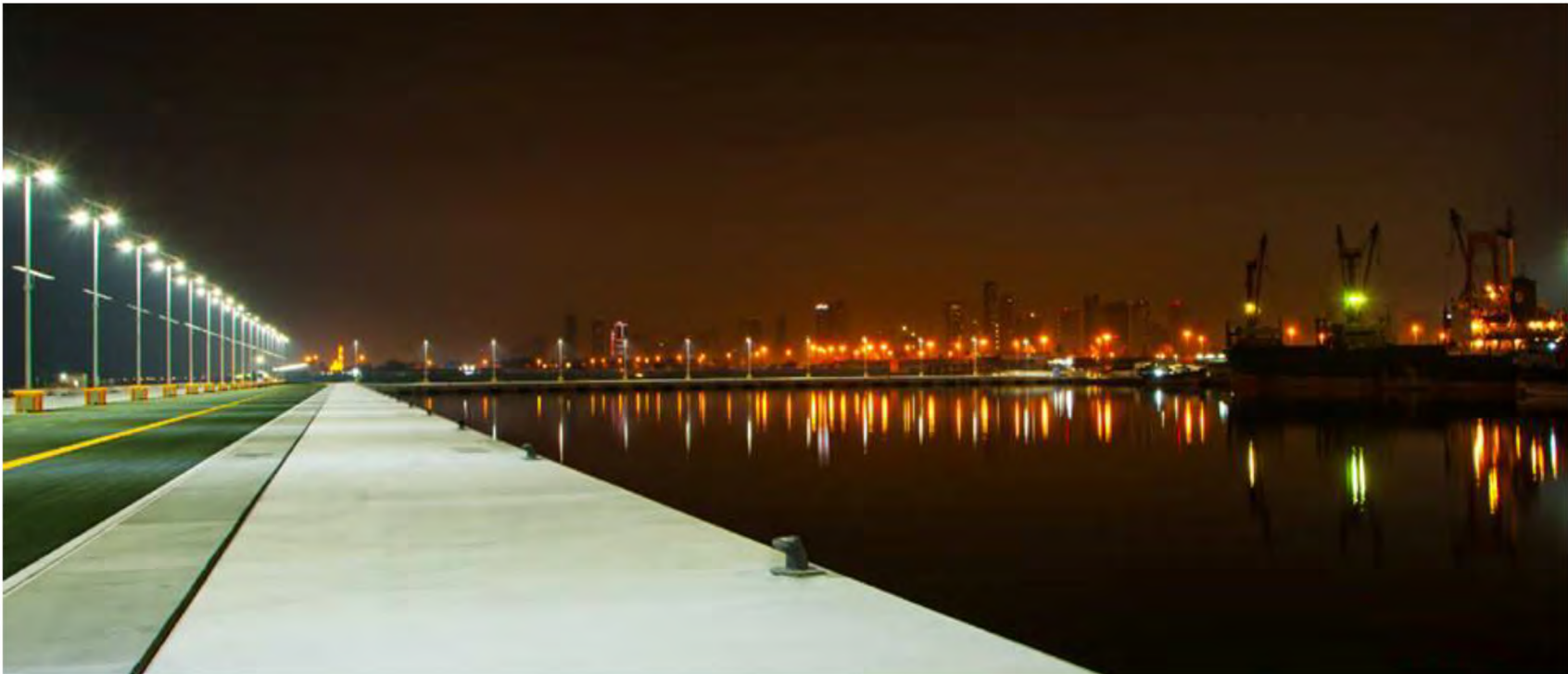
- Installation Time: June 2017
- Location: Tartu, Estonia Installed
- Luminaire: ECO-SID20 4000K

STREET LIGHTING PROJECT IN UAE



- Installation Time: August 2016
- Location: Dubai, UAE
- Installed Luminaire: ALFA Series ECO-SLD90

STREET LIGHTING PROJECT IN UAE



- Installation Time: August 2016
- Location: Dubai, UAE
- Installed Luminaire: ALFA Series ECO-SLD90

STREET LIGHTING PROJECT IN CANADA



- Installation Time: September 2017 Location:
- Canada
- Installed Luminaire: ALFA Series ECO-SLB80

STREET LIGHTING PROJECT IN CANADA



Installation Time: May 2017
Location: St-Felicien, QC, CA Installed
Luminaire: ALFA Series ECO-SLB80

ONE STEEL MINE SITE LIGHTING PROJECT

Location: New South Wales, Australia
Products Used: Arrlux 900W AURORA Floodlights

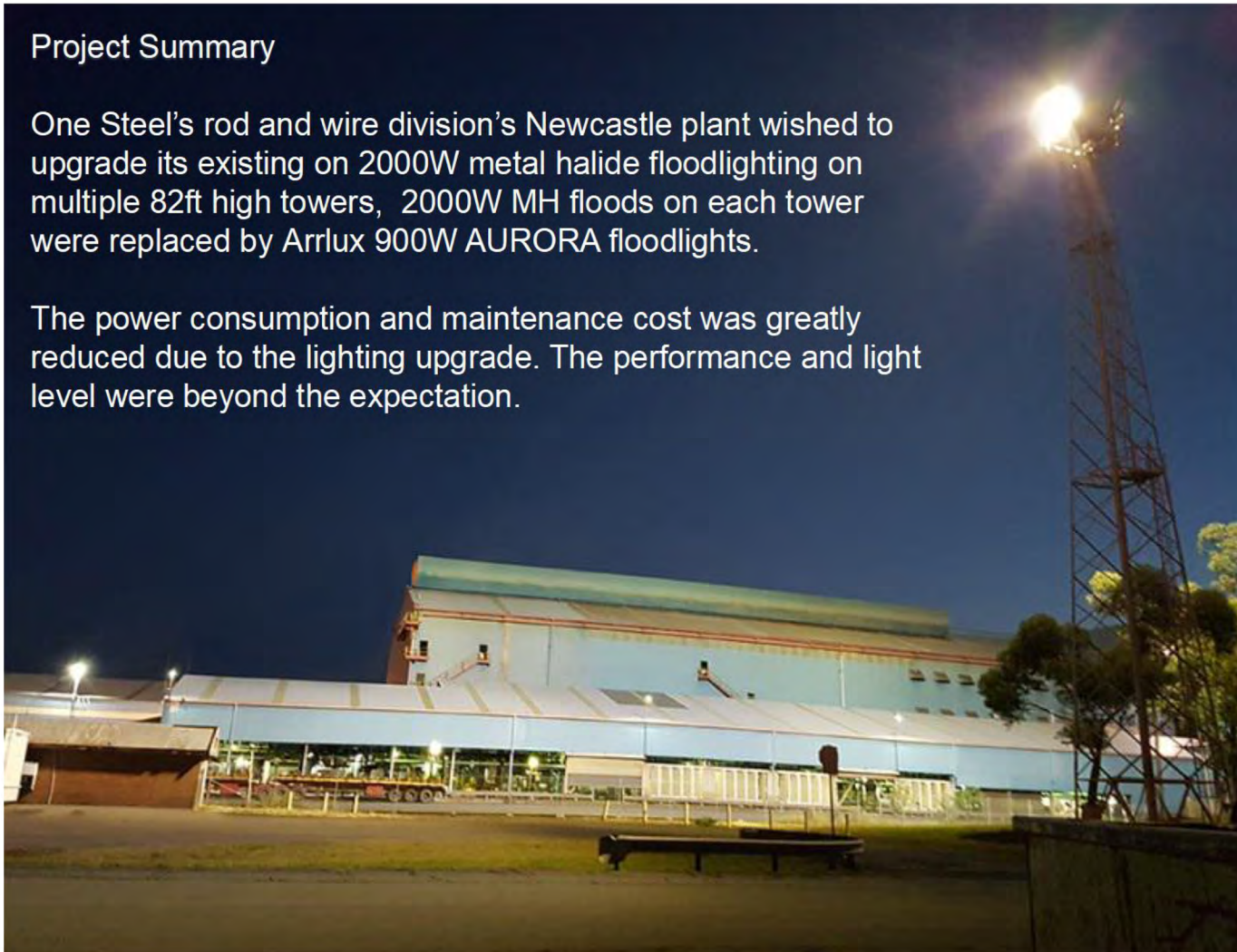


ONE STEEL MINE SITE LIGHTING PROJECT

Project Summary

One Steel's rod and wire division's Newcastle plant wished to upgrade its existing on 2000W metal halide floodlighting on multiple 82ft high towers, 2000W MH floods on each tower were replaced by Arrlux 900W AURORA floodlights.

The power consumption and maintenance cost was greatly reduced due to the lighting upgrade. The performance and light level were beyond the expectation.



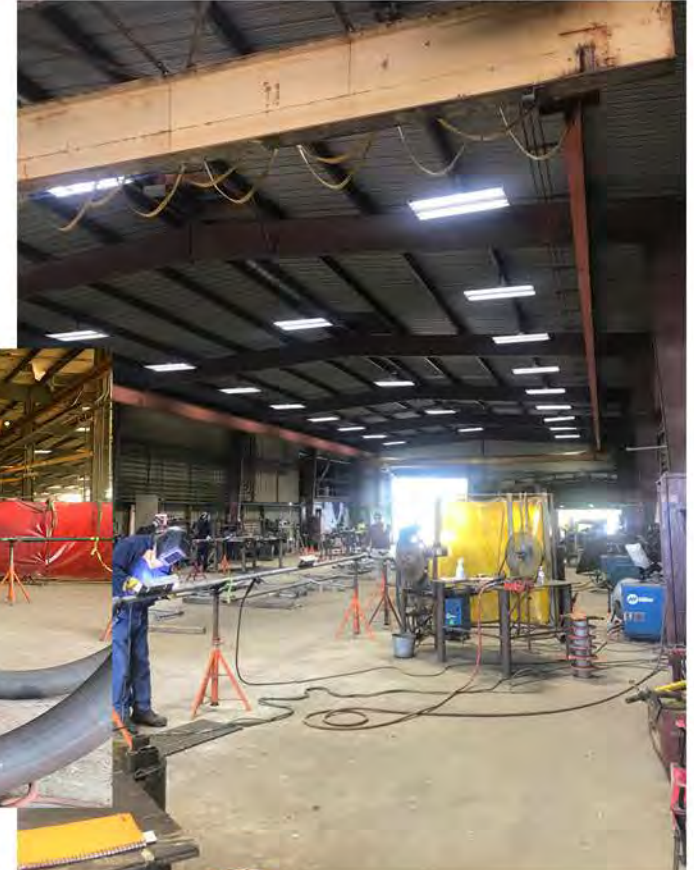
TURNER INDUSTRIES INDUSTRIAL LIGHTING

EcoLiteTM
Leader in LED Lighting

BEFORE



AFTER



- Installation Time: 2020
- Location: Port Allen, Louisiana
- Installation: LED NEW ECO-HBL24D-320W-07 METEOR HIGH BAY LUMINAIRE FIXTURE. 5000K. FROSTED LENS. 100-277MV

FACTORY LIGHTING PROJECT



- Installation Time: November, 2017
- Location: Quebec, Canada
- Installed Luminaire: ECO-BCA60, ECO-WLB120, ECO-FLD450-U, ECO-FLB320-L

FACTORY LIGHTING PROJECT



- Installation Time: April 2017
- Location: USA
- Installed Luminaire: ECO-BLB60
Linear Light

WAREHOUSE LIGHTING PROJECT



- Installation Time: June, 2017
- Location: USA
- Installed Luminaire: ECO-BLB40
Linear Light

ESTONIA KINDERGARDEN LIGHTING PROJECT



Day



Night



The LED Lighting industry's only
10 Year Non-Prorated
Product & Labor Warranty.

CORPORATE OFFICES:

BATON ROUGE, LOUISIANA
CARROLLTON, TEXAS
HOUSTON, TEXAS

[1-844-LED-SWAP \(533-7927\)](tel:1-844-LED-SWAP)

info@EcoLiteLED.com

ECOLITELED.COM

PROJECT REFERENCES

Eco**Lite**TM
Leader in LED Lighting